



Thruway
Authority



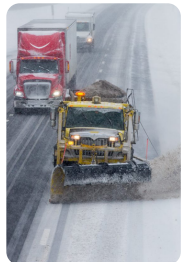
Thruway Maintenance Worker (TMW)

COME JOIN OUR TEAM!

Thruway Maintenance Worker (TMW) and Thruway Maintenance Worker Trainees, work as a member of a team performing maintenance, repair, improvement and reconstruction of pavements, shoulders, medians, right-of-way, facilities, ramps, interchanges, bridges, culverts, water control and other structures, appurtenances and retaining walls. TMW's perform snow and ice control activities; operate and perform maintenance and minor repairs on a variety of self-propelled pneumatic and other equipment; and may serve as a team leader and provide guidance and instruction to others. Often the duties require medium to heavy physical effort, exposure to adverse weather conditions, standing for prolonged periods of time, sometimes working in confined spaces and at heights. Duties require use of personal safety equipment, including respirators.

The Thruway Authority recognizes that the talent, hard work and dedication of our employees is the driving force behind our success. We offer competitive pay and excellent benefits INCLUDING:

- Health Insurance
- Prescription Coverage
- Dental & Vision Plans
- 13 Paid Holidays
- Accrued Paid Sick, Vacation & Personal Leave
- Excellent Retirement Plan/Pension Eligibility
- Sick Leave Incentive Bonus
- Tuition Assistance Program up to 90% tuition reimbursement/15 credit hours per year.
- Deferred Compensation
- On-the-Job Training
- Service Award Payments upon completion of 10 years of service



MINIMUM QUALIFICATIONS

TMW Trainee 1 Level – 36-Month Traineeship

- Possession of a valid New York State Commercial Driver License Class B Permit with tank endorsement and no air brake restriction.

TMW Trainee 2 Level – 24 Month Traineeship

- One year as a TMW Trainee 1; OR
- Possession of a Commercial Driver License Class B with tank endorsement and no air brake restriction and six months of experience operating construction equipment and vehicles and twelve months of experience in carpentry, masonry, welding, ironwork, or other trade related to bridge construction or repair; OR
- A valid Commercial Driver License Class B with tank endorsement and no air brake restriction and eighteen months of experience operating construction equipment and vehicles.

TMW Trainee 3 Level – 12 Month Traineeship

- One year as a TMW Trainee 2; OR
- Possession of a Commercial Driver License Class B with tank endorsement and no air brake restriction; AND Twelve months of experience in operating construction equipment and vehicles; AND Eighteen months of experience in carpentry, masonry, welding, ironwork, or other trade related to bridge construction or repair.

Journey-Level TMW

- Satisfactory completion of a three-year TMW Traineeship; OR
- Possession of a New York State Commercial Driver License Class B with tank endorsement and no air brake restriction; AND One year of experience operating construction equipment and vehicles; AND EITHER Two years of experience in carpentry, masonry, ironwork, welding, or other trade related to bridge construction or repair; OR Training received through completion of a two year technical school course in carpentry, masonry, welding, ironwork, or other trade related to bridge construction or repair; OR Completion of a high school technical course in carpentry, masonry, welding, ironwork, or other trade related to bridge construction or repair and 12 months of experience in bridge construction or repair.



**Thruway
Authority**

**APPLY AT
THRUWAY.NY.GOV**

