

**NEW YORK STATE THRUWAY AUTHORITY
DEPARTMENT OF ENGINEERING**

**ALBANY, NY
April 5, 2024**

**AMENDMENT NO. 2
TO**

**CONTRACT TAB 24-13
D214968
PAVEMENT REHABILITATION AND
MISCELLANEOUS WORK FROM MILEPOST
(MP) 467.0 TO MP 485.5 WESTBOUND AND
MP 483.0 TO MP 467.0 EASTBOUND
IN THE BUFFALO DIVISION
IN CHAUTAUQUA COUNTY**

**IN THE LETTING OF
APRIL 17, 2024**

NOTE: This amendment shall be attached to and become a part of the Proposal for Contract **TAB 24-13**.

NOTICE

For Electronic Bidders, the Project's amended EBSX file will automatically account for any necessary item changes (deletions, changes in quantities, or additions) that this Amendment may describe as being required regarding the project's estimated cost. Instructions to make physical changes to the Project Proposal's bid sheets are intended for "paper" Bidders who choose to submit bids via paper.

Questions and Answers for this project are available from the Authority's website, specifically at: http://www.thruway.ny.gov/netdata/contractors/documents/d214968_tab24-13_questions-and-answers-04-04-2024.pdf. This document may be updated periodically without formal issuance of an Amendment. Prospective bidders are advised to revisit this link weekly and before proposals are due, for any possible additional questions and answers information.

Similarly, additional Supplemental Information for this project is not presently available from the Authority's website. Prospective bidders are advised to revisit the website weekly and before proposals are due, for any possible additional supplemental information.

PROPOSAL

1. **CHANGE** the estimated quantity for the following Items:

<u>Contract Proposal Page</u>	<u>Item No.</u>	<u>Description</u>	<u>Unit</u>	<u>Initial Estimated Quantity</u>	<u>Revised Estimated Quantity</u>
162	203.02	Unclassified Excavation and Disposal	CY	15,213	15,490
163	404.000011	Plant Production Quality Adjustment to Asphalt Items	QU	13,353	13,367
163	404.197901	19 F9 Binder Course Asphalt, 70 Series Compaction	TON	2,324	2,410
163	404.377901	37.5 F9 Binder Course Asphalt, 70 Series Compaction	TON	13,360	13,535
163	407.01040009	Non-Tracking Tack Coat	GAL	91,255	91,361
168	627.5014 08	Cutting Pavement	LF	39,484	41,968

The “paper” Bidder shall **CROSS OUT** the estimated quantity shown for these items in the Contract Proposal, **WRITE IN** the revised estimated quantity, and submit its bid based on the noted changes. If the Bidder fails to make these changes, the Authority will do so and adjust the BID AMOUNT for the items and TOTAL BID, accordingly.

PLANS

2. **DELETE** Drawing Number MSD-2, Sheet 22 of 126, and **SUBSTITUTE** with the attached Drawing Number MSD-2, Sheet 22-A2 of 126. The Single Slope Precast Concrete Half Section Barrier Typical Section (Prior to Milling & Overlaying Operation) detail and associated pay items have been added to the drawing. The Notes previously found on the upper right corner of the drawing have been renamed “Half Section Barrier Notes”, and a new Note 5 has been added. Similarly, the Notes previously adjacent to the Bridge Overpass Vertical Clearance detail has been renamed to “Vertical Clearance Notes”. These notes remain the same.

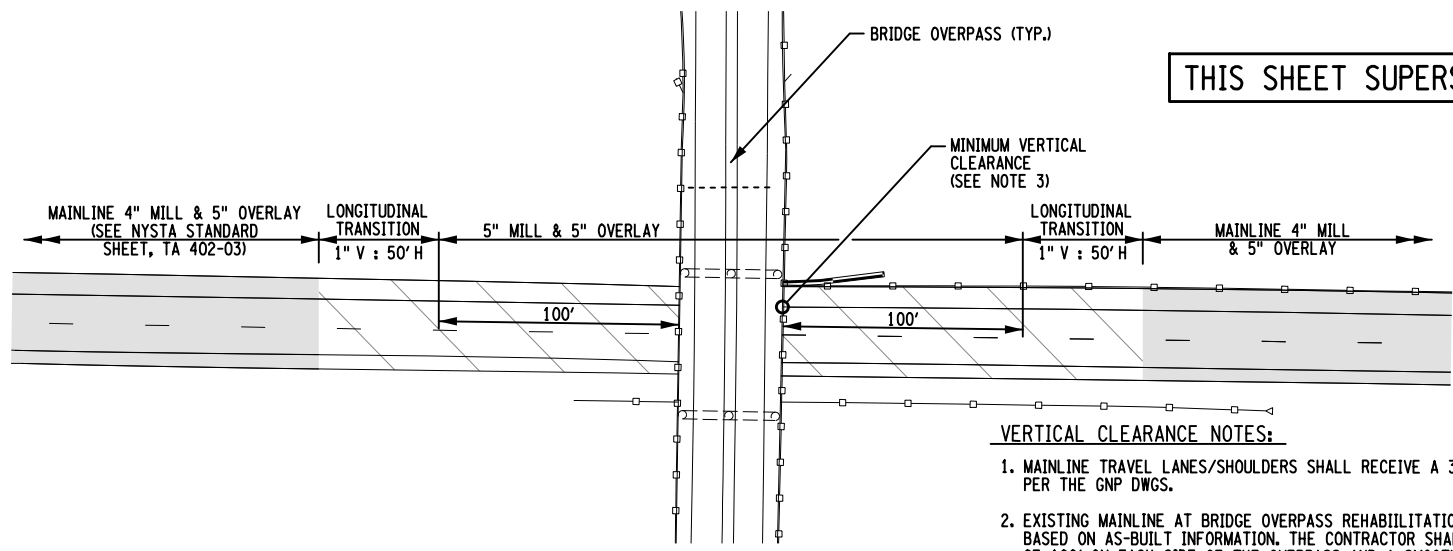
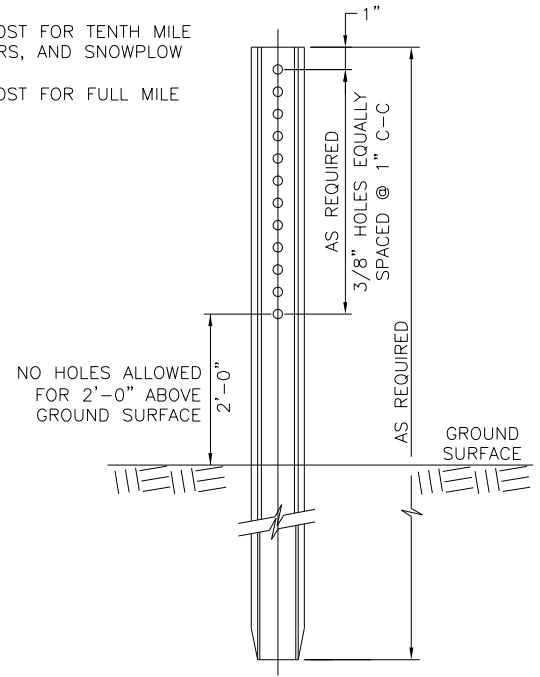
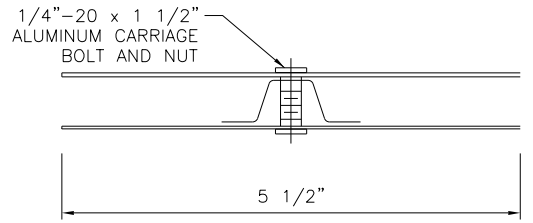
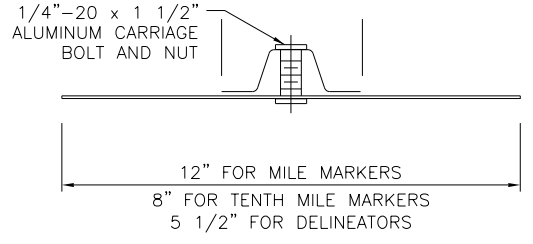
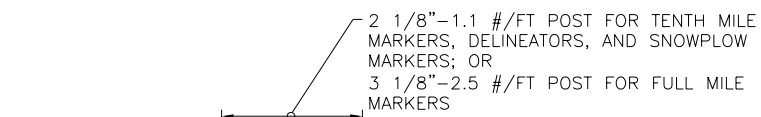
Lastly, for clarification purposes and despite the mention of “126” above, there are currently 128 plan sheets in this project’s plan set. Two new drawings were added in Amendment 1. Refer to Amendment 1 issued on April 1, 2024, for further information.

The Bidder **MUST** complete Page **184** of the Proposal acknowledging receipt of this amendment. If the Bidder fails to complete the “Amendment Acknowledgement” sheet, his bid could be declared informal thereby delaying award of the contract.

PLEASE BE GOVERNED ACCORDINGLY WHEN SUBMITTING BIDS.

Brent E. Howard, P.E.
Chief Engineer

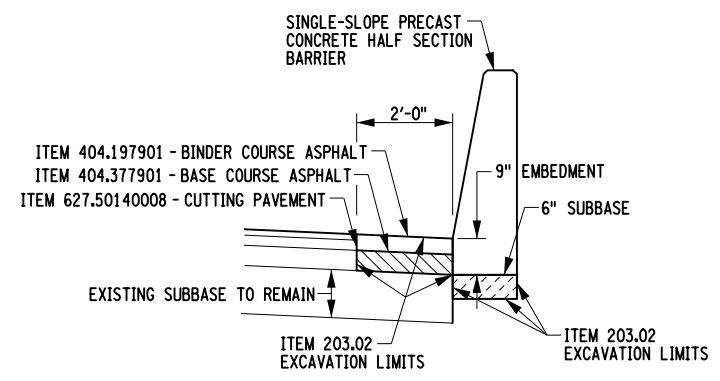
THIS SHEET SUPERSEDES SHEET 22



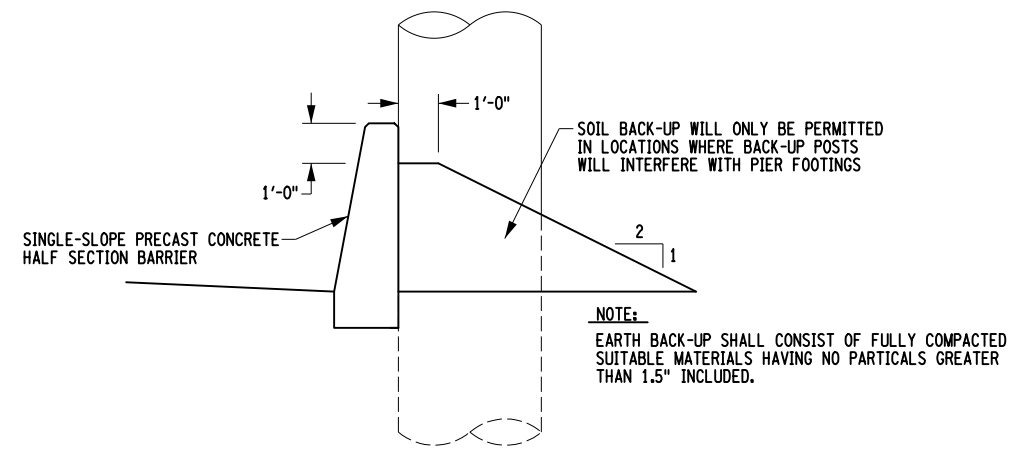
- VERTICAL CLEARANCE NOTES:**
1. MAINLINE TRAVEL LANES/SHOULDERS SHALL RECEIVE A 3" MILL & 4" OVERLAY PER THE GNP DWGS.
 2. EXISTING MAINLINE AT BRIDGE OVERPASS REHABILITATION LIMITS ARE APPROXIMATE BASED ON AS-BUILT INFORMATION. THE CONTRACTOR SHALL REHABILITATE A MINIMUM OF 100' ON EACH SIDE OF THE OVERPASS AND A SMOOTH TRANSITION SHALL BE PROVIDED TO AND FROM THE REHABILITATION SEGMENT PER NYSTA STANDARD SHEET, TA 402-03.
 3. BASED ON AS-BUILT INFORMATION THE MINIMUM VERTICAL CLEARANCE HAS BEEN ESTABLISHED. THE CONTRACTOR SHALL ACCOUNT FOR EXISTING CROSS-SLOPE AND/OR SUPERELEVATION WHEN TRANSITIONING FROM 3" MILL / 4" OVERLAY TO A 5" MILL / 5" OVERLAY SEGMENT TO MAINTAIN EXISTING MINIMUM VERTICAL CLEARANCE.

BRIDGE OVERPASS VERTICAL CLEARANCE
5" MILL & 5" OVERLAY TRANSITION
(EXISTING VERTICAL CLEARANCE MAINTAINED)
N.T.S.

DELINEATOR CONNECTION DETAIL
N.T.S.



SINGLE-SLOPE PRECAST CONCRETE HALF SECTION BARRIER TYPICAL SECTION
(PRIOR TO MILLING & OVERLAY OPERATION)
N.T.S.



SINGLE-SLOPE PRECAST CONCRETE HALF SECTION BARRIER WITH EARTH BACK-UP
N.T.S.

- HALF SECTION BARRIER NOTES:**
1. BACK-UP POSTS SHALL BE INSTALLED IN ACCORANCE WITH NYSTA STANDARD SHEET TA-606-13 WHEN BACK-UP POSTS CAN NOT BE INSTALLED, SELECT STRUCTURE FILL MEETING THE REQUIREMENTS OF SECTION 733-14 OF THE NYSDOT STANDARD SPECIFICATION SHALL BE INSTALLED AS DETAILED, AND COMPACTED TO 90% STANDARD PROCTOR MAX DENSITY. COST OF POSTS AND BACKFILL SHALL BE INCLUDED IN THE PRICE BID FOR SINGLE SLOPE CONCRETE BARRIER.
 2. SEE TABLE OF PIER PROTECTION ON DWG.'S MST-7 TO MST-10.
 3. TRAILING END TRANSITION SHALL BE USED FOR GUIDE RAIL RUNS THAT CONTINUE PAST THE PIER/ABUTMENT. SEE TABLE OF PIER PROTECTION FOR FURTHER INFORMATION.
 4. SUBBASE AND FILL BEHIND BARRIER ARE TO BE PAID FOR UNDER BARRIER ITEM 606.3062.
 5. CONTRACTOR SHALL NOTE THE ASPHALT LIFT THICKNESS MAY VARY BY LOCATION. ASSUME 6" BASE COURSE WITH 3" BINDER COURSE; BINDER COURSE SHALL BE USED UP TO THE DRIVING SURFACE.

Checked By: B. WALKER
Drafted By: S. ROMEISER
Checked By: J. JOHNS
Designed By: B. WALKER
Design Supervisor: R. CARTWRIGHT

ALTERED ON: _____ AFFIXED ON: 04/04/2024

IT IS A VIOLATION OF LAW FOR ANY PERSON, UNLESS THEY ARE ACTING UNDER THE DIRECTION OF A LICENSED PROFESSIONAL ENGINEER, ARCHITECT, LANDSCAPE ARCHITECT, OR LAND SURVEYOR, TO ALTER AN ITEM IN ANY WAY. IF AN ITEM BEARING THE STAMP OF A LICENSED PROFESSIONAL IS ALTERED, THE ALTERING ENGINEER, ARCHITECT, LANDSCAPE ARCHITECT, OR LAND SURVEYOR SHALL STAMP THE DOCUMENT AND INCLUDE THE NOTATION "ALTERED BY" FOLLOWED BY THEIR SIGNATURE, THE DATE OF SUCH ALTERATION, AND A SPECIFIC DESCRIPTION OF THE ALTERATION.

HIGHWAY LEGEND

	1" OR 2" MILL AND OVERLAY
	4" MILL AND 5" OVERLAY
	UNDERCLEARANCE IMPROVEMENT
	FULL DEPTH RECONSTRUCTION
	ACCEL LANE CONSTRUCTION

REVISIONS

DATE	DESCRIPTION	BY	SYM.

NEW YORK STATE OF OPPORTUNITY | **Thruway Authority**

Stantec

TITLE OF PROJECT ROADSIDE IMPROVEMENTS	CONTRACT NUMBER: TAB 24-13
LOCATION OF PROJECT BUFFALO DIVISION MP 467.00 TO MP 485.50	DATE: 04/04/2024
TITLE OF DRAWING MISCELLANEOUS DETAILS	DRAWING NUMBER: MSD-2