



## Monthly Financial Report

March 2022  
Supplement



# Operating Results

---

## Operating Expenses

Category	Year-To-Date			Percent Change
	2021	2022	Change	
<b>Thruway Operating Expenses</b>				
Admin and General	\$2,701,063	\$2,501,464	(\$199,599)	-7.4%
Information Technology	3,213,478	10,041,497	6,828,019	212.5%
Engineering Services	1,380,860	1,436,409	55,549	4.0%
Maintenance Engineering				
Thruway Maintenance	26,411,195	28,070,221	1,659,026	6.3%
Equipment Maintenance	6,946,090	8,122,681	1,176,591	16.9%
Finance and Accounts	1,466,201	1,565,848	99,647	6.8%
Operations				
Traffic and Services	2,201,784	2,623,080	421,296	19.1%
Toll Collection	20,637,574	24,528,081	3,890,507	18.9%
General Charges *	24,822,682	25,176,223	353,541	1.4%
<b>Total Thruway Operating</b>	<b>\$89,780,927</b>	<b>\$104,065,504</b>	<b>\$14,284,577</b>	<b>15.9%</b>
<b>Other Operating Expenses</b>				
<b>State Police**</b>	\$15,521,721	\$14,841,158	(\$680,563)	-4.4%
<b>Total Other Operating Expenses</b>	<b>\$15,521,721</b>	<b>\$14,841,158</b>	<b>(680,563)</b>	<b>-4.4%</b>
<b>Total Operating Expenses</b>	<b>\$105,302,648</b>	<b>\$118,906,662</b>	<b>\$13,604,014</b>	<b>12.9%</b>

\* Includes changes relative to unfunded OPEB and Pension Adjustment (See Notes C and D of Monthly Statement) and are as follows:

Pension Contributions	\$5,336,001	\$4,500,000	(\$836,001)	-15.7%
Pension Adjustment LT liability and deferred Pension resources	0	\$0	\$0	-
Unfunded Retiree Health Insur. & Other Benefits	0	0	0	-
Funded Health Insurance & Other Benefits	15,877,919	16,704,234	826,315	5.2%
Social Security	2,408,848	2,501,027	92,179	3.8%
Workers' Compensation Insurance	1,800,000	1,800,390	390	0.0%
Other General Charges	(600,086)	(329,428)	270,658	-45.1%
<b>Total General Charges</b>	<b>\$24,822,682</b>	<b>\$25,176,223</b>	<b>\$353,541</b>	<b>1.4%</b>

\*\* Reflects the State Police expenses that the Authority reimburses the State as part of the 2016/17 Approved State Budget as of 4/1/2016. This includes reimbursement for purchase of vehicles and equipment.

## Operating Revenues

Category	Year-To-Date			Percent Change
	2021	2022	Change	
<b>Toll Revenue</b>				
Passenger Revenue	\$149,709,077	\$171,509,149	\$21,800,072	14.6%
Commercial Revenue	71,194,101	83,291,437	12,097,336	17.0%
	78,514,976	88,217,712	9,702,736	12.4%
<b>Toll Related Fees</b>				
E-ZPass Fees	7,162,358	17,325,859	10,163,501	141.9%
Toll by Mail Fees	3,256,037	2,959,980	(296,057)	-9.1%
Special Hauling	3,445,929	13,859,858	10,413,929	302.2%
	460,392	506,021	45,629	9.9%
<b>Lease Revenues</b>				
Fiber Optic User Fees	3,040,786	2,933,245	(107,541)	-3.5%
Service Areas	2,228,731	2,004,030	(224,701)	-10.1%
	812,055	929,215	117,160	14.4%
<b>Other Revenues</b>	750,946	795,468	44,522	5.9%
<b>Total Operating Revenue</b>	<b>\$160,663,167</b>	<b>\$192,563,721</b>	<b>\$31,900,554</b>	<b>19.9%</b>

\*\*\* Toll by Mail fee's are from the All Electronic Toll Collection operation at the Gov. Mario M. Cuomo Bridge Barrier that started April 2016 and for the North & South Grand Island Bridge Barriers in March 2018, Harriman 2018, Yonkers November 2018, New Rochelle

## Operating Budget vs. Actual

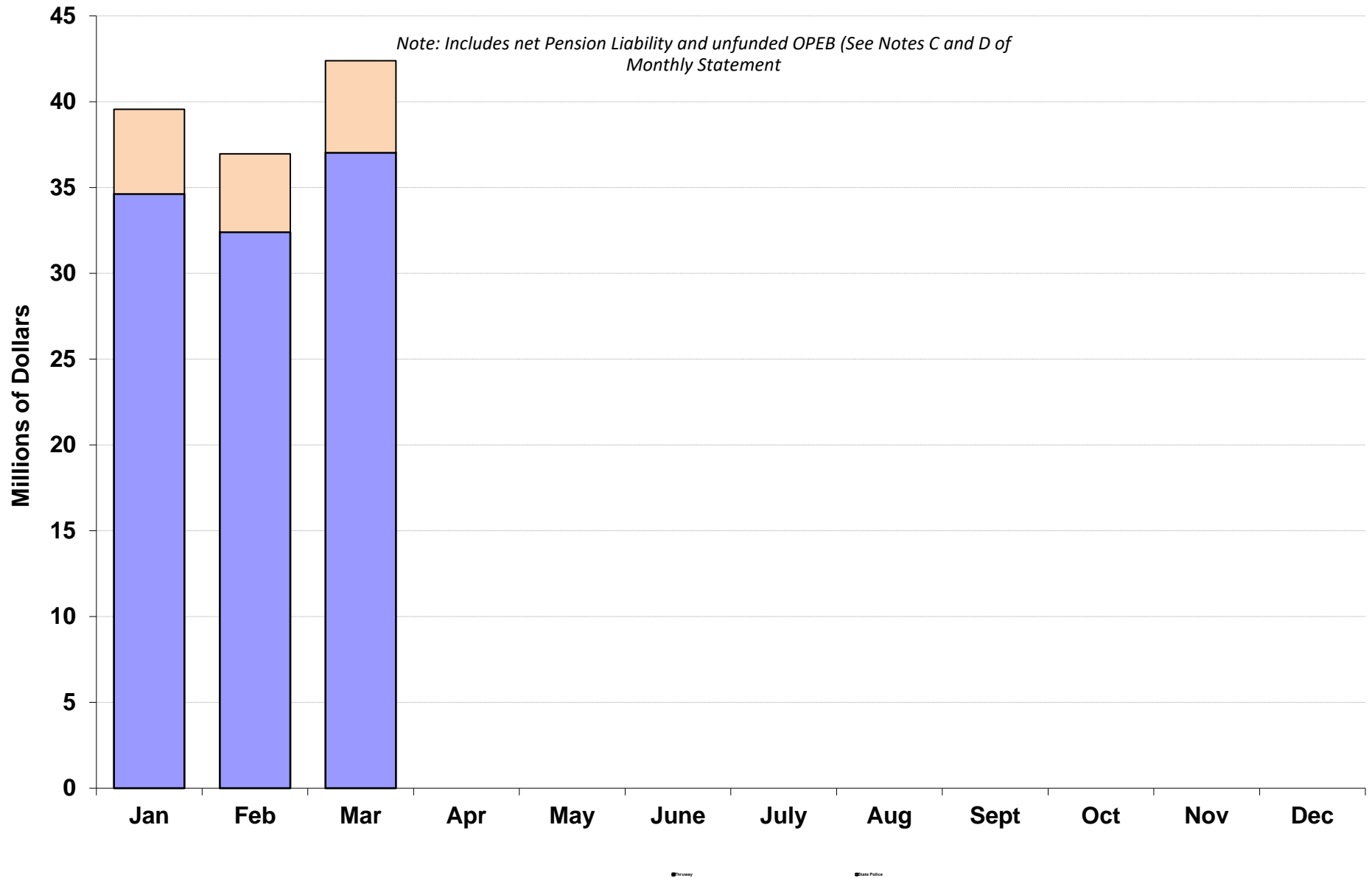
	Year-To-Date			
	2022 Budget	Actual	Difference	Percent Difference
<b>Total Operating Expenses:</b>				
Thruway Operating Expenses *	\$98,965,713	\$104,066,565	\$5,100,852	5.2%
Claims, Envir. Reserves and AET trans.	250,000	0	(250,000)	-100.0%
Other Operating Expenses- State Police **	16,116,157	14,841,158	(1,274,999)	-7.9%
Total Operating Expenses	\$115,331,870	\$118,907,723	\$3,575,853	3.1%
 <b>Total Operating Revenues:</b>				
Net Toll Revenue ***	\$158,631,003	\$171,509,149	\$12,878,146	8.1%
Toll Related Fees	15,361,644	\$17,325,859	1,964,215	12.8%
Lease Revenues	1,690,126	\$2,933,245	1,243,119	73.6%
Other Revenues	1,280,000	\$819,854	(460,146)	-35.9%
Total Operating Revenue	\$176,962,772	\$192,588,107	\$15,625,335	8.8%

\* Excludes unfunded OPEB (See Note D of Monthly Statement) and adjustment of net Pension liability and changes in Inflows/outflows adopted in 2015 in accordance with GASB 68 (see Note C).

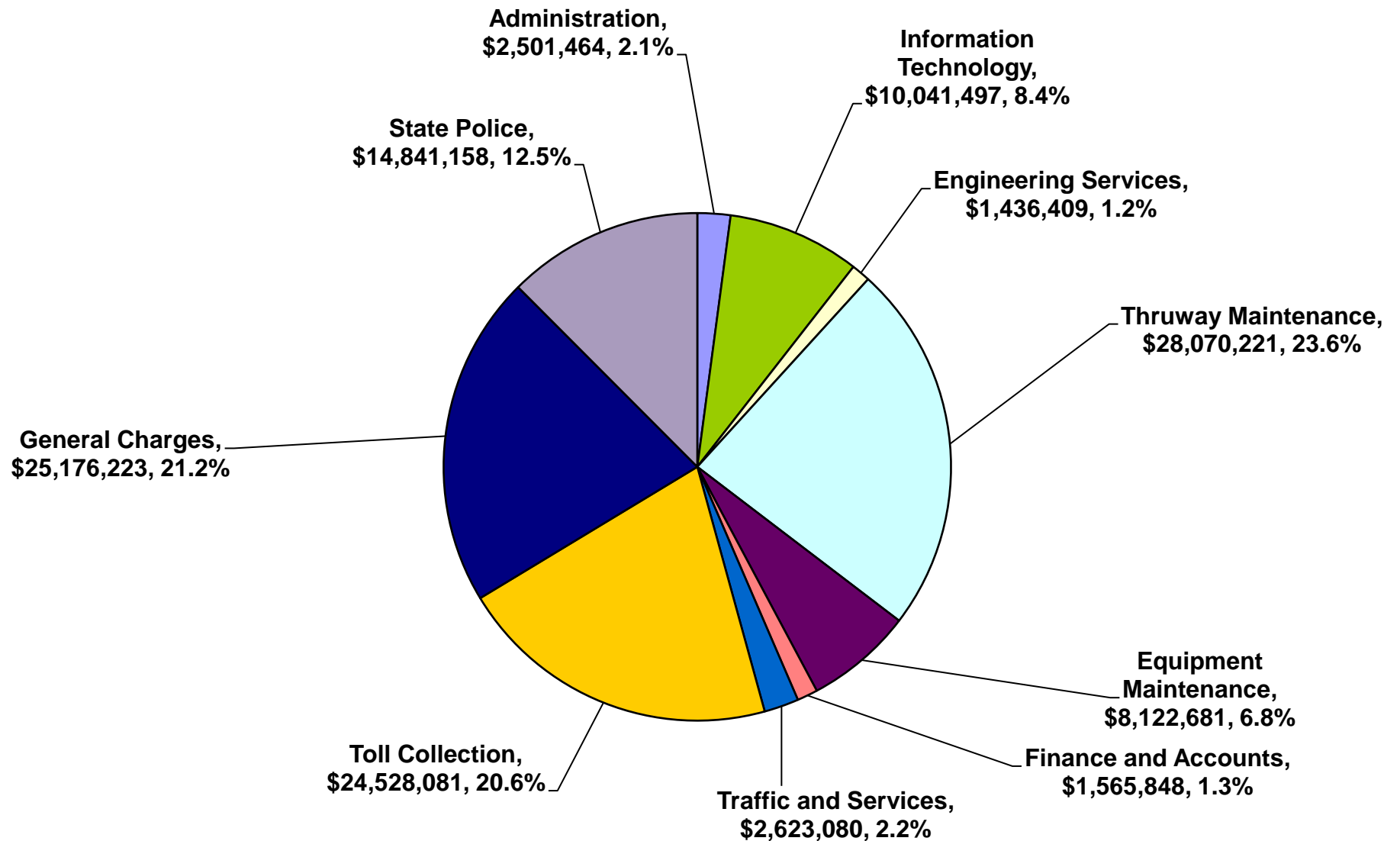
\*\* The State's 2016/17 Budget provides the Authority reimburse for State Police - Troop T costs as of 4/1/2016. This includes reimbursement for equipment and vehicles that are typically billed later in year.

\*\*\* Includes the adjustment of accounts receivable for Tolls by Mail which is outstanding and thus not available until paid.

# 2022 YTD Operating Expenses

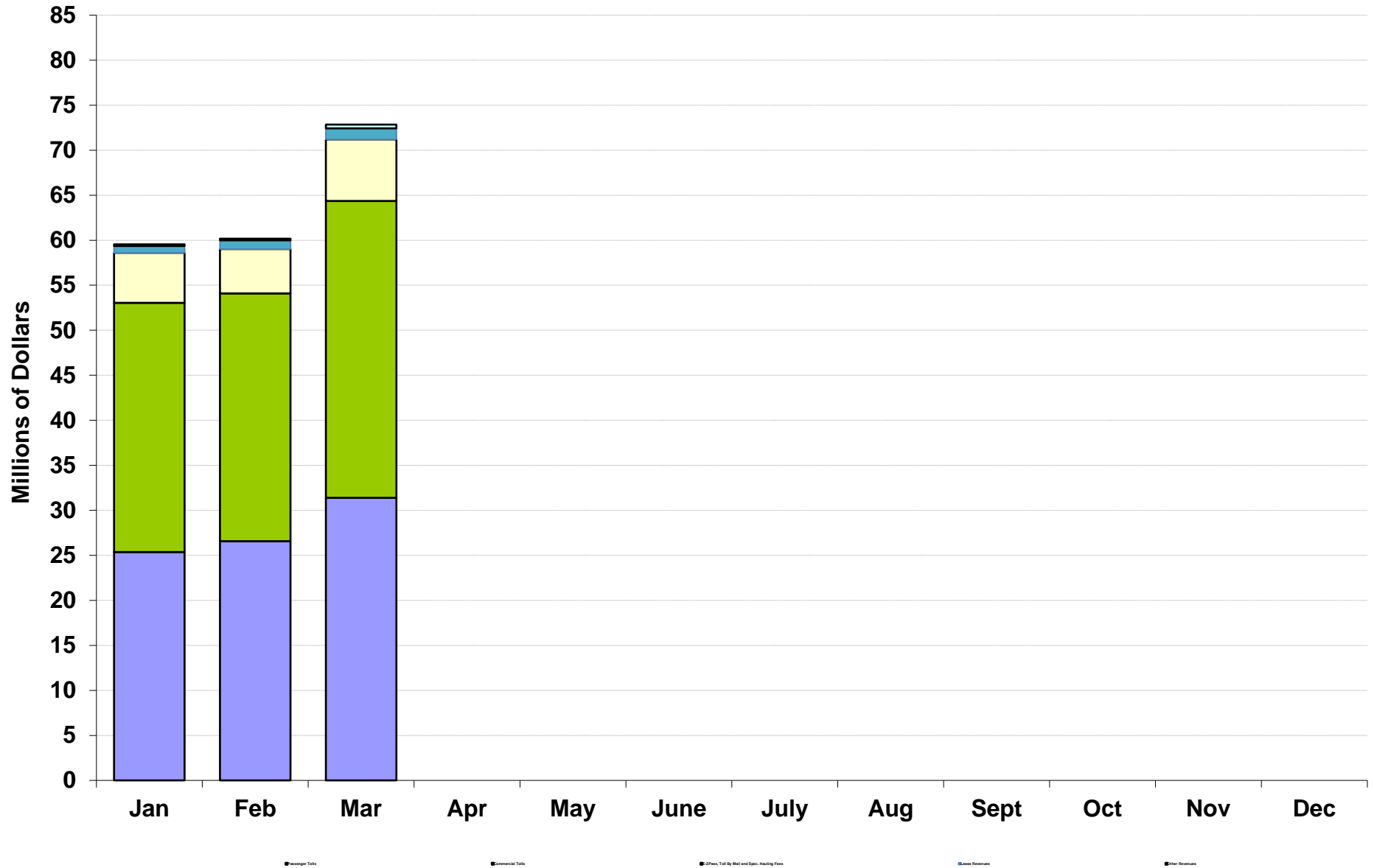


# 2022 YTD Operating Expenses

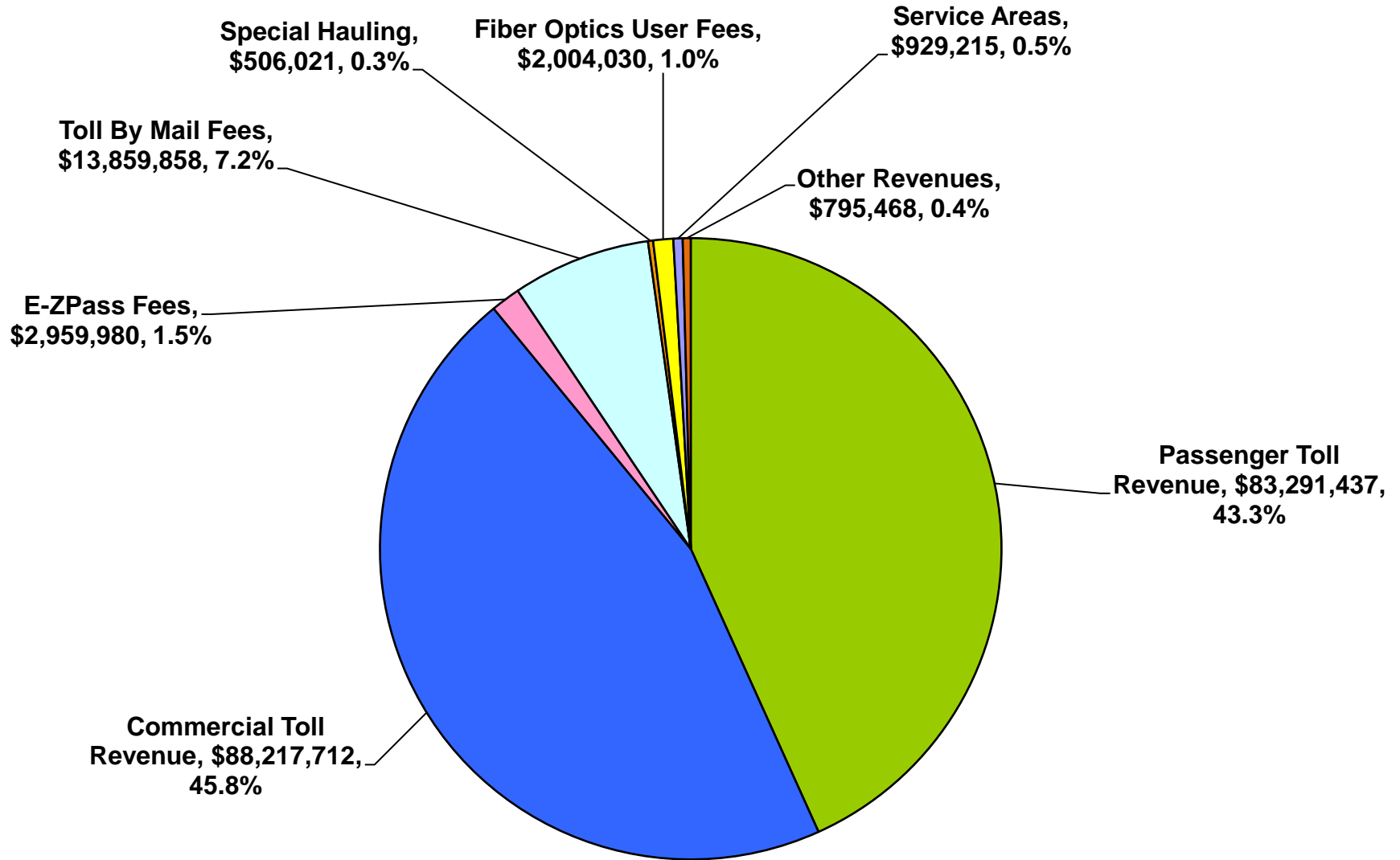


Note: General Charges include net Pension liability and unfunded OPEB (See Notes C and D of Monthly Statement)

# 2022 YTD Operating Revenues

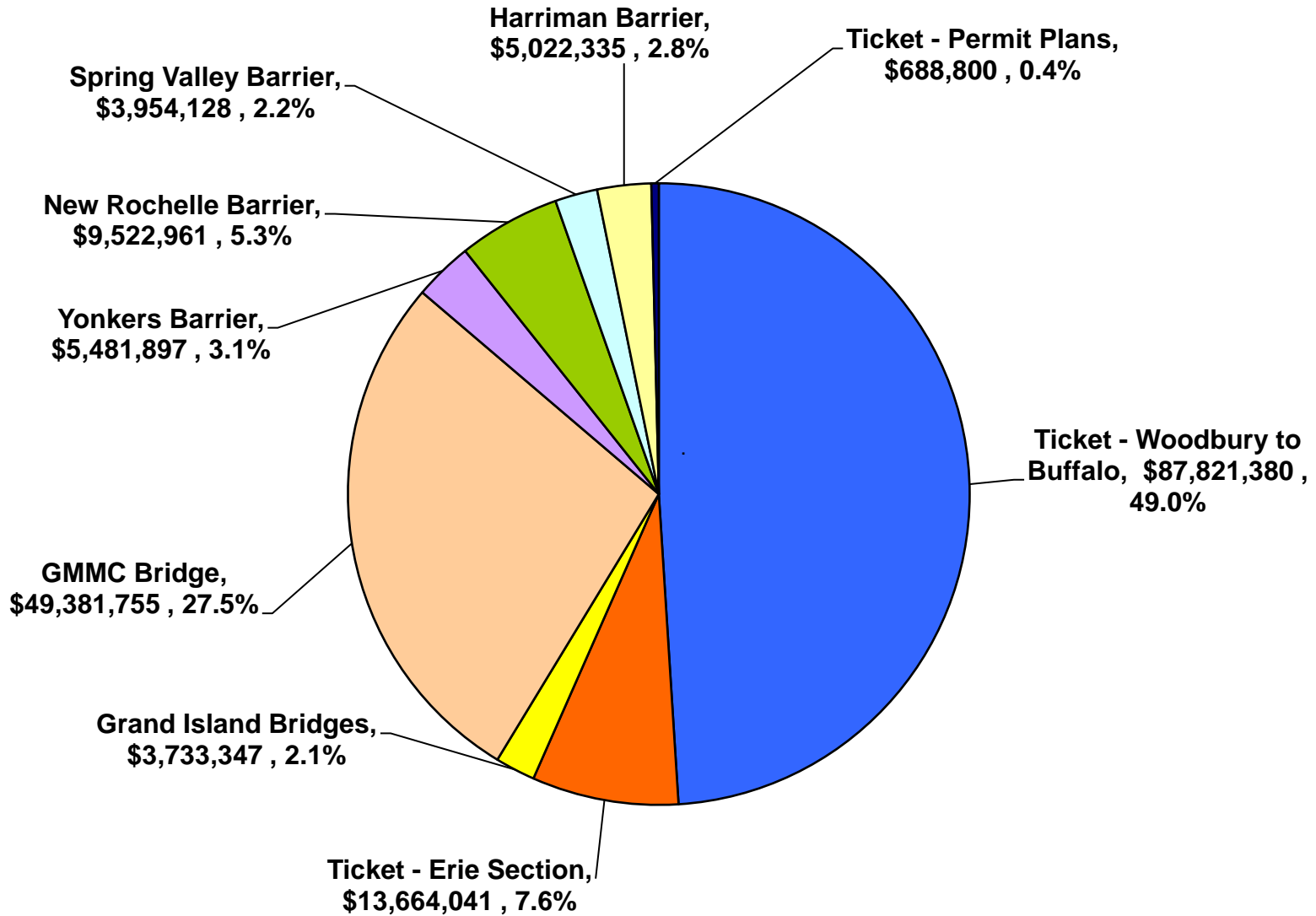


# 2022 YTD Operating Revenue



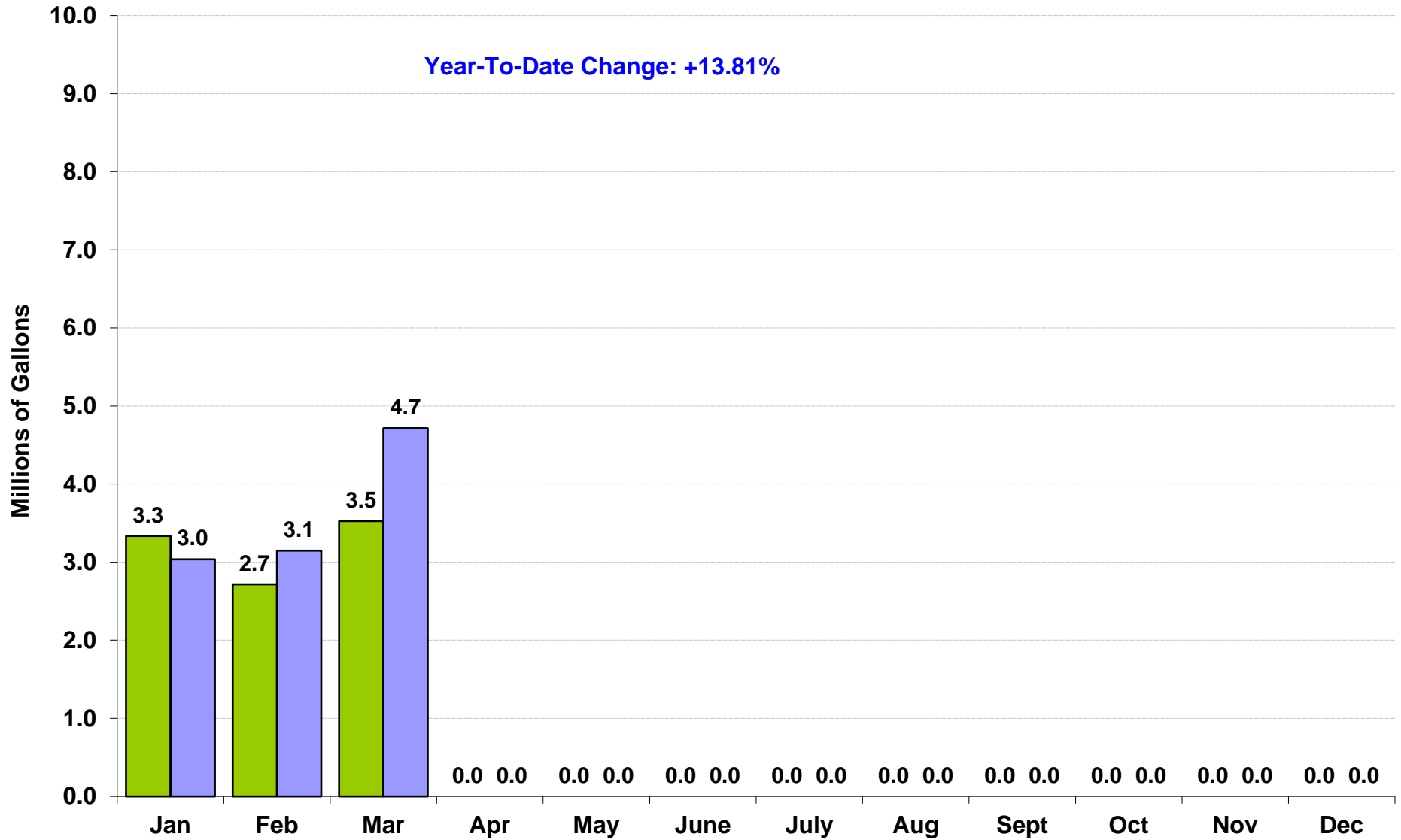


# 2022 YTD Toll Collections, By Location

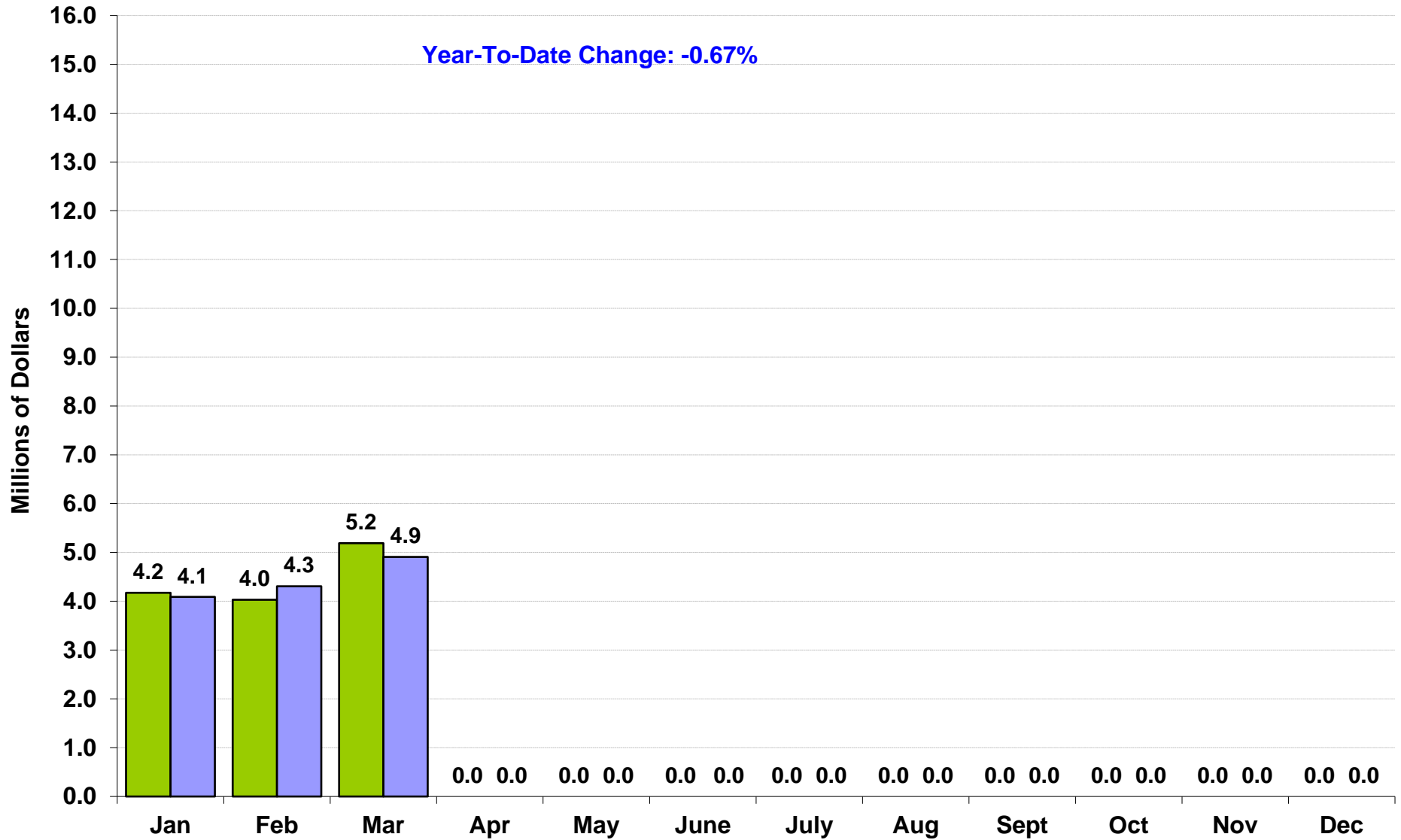


*Note: Excludes Impact of Commercial Volume Discount Program.*

# Fuel Deliveries to Service Areas



# Restaurant Sales at Service Plazas



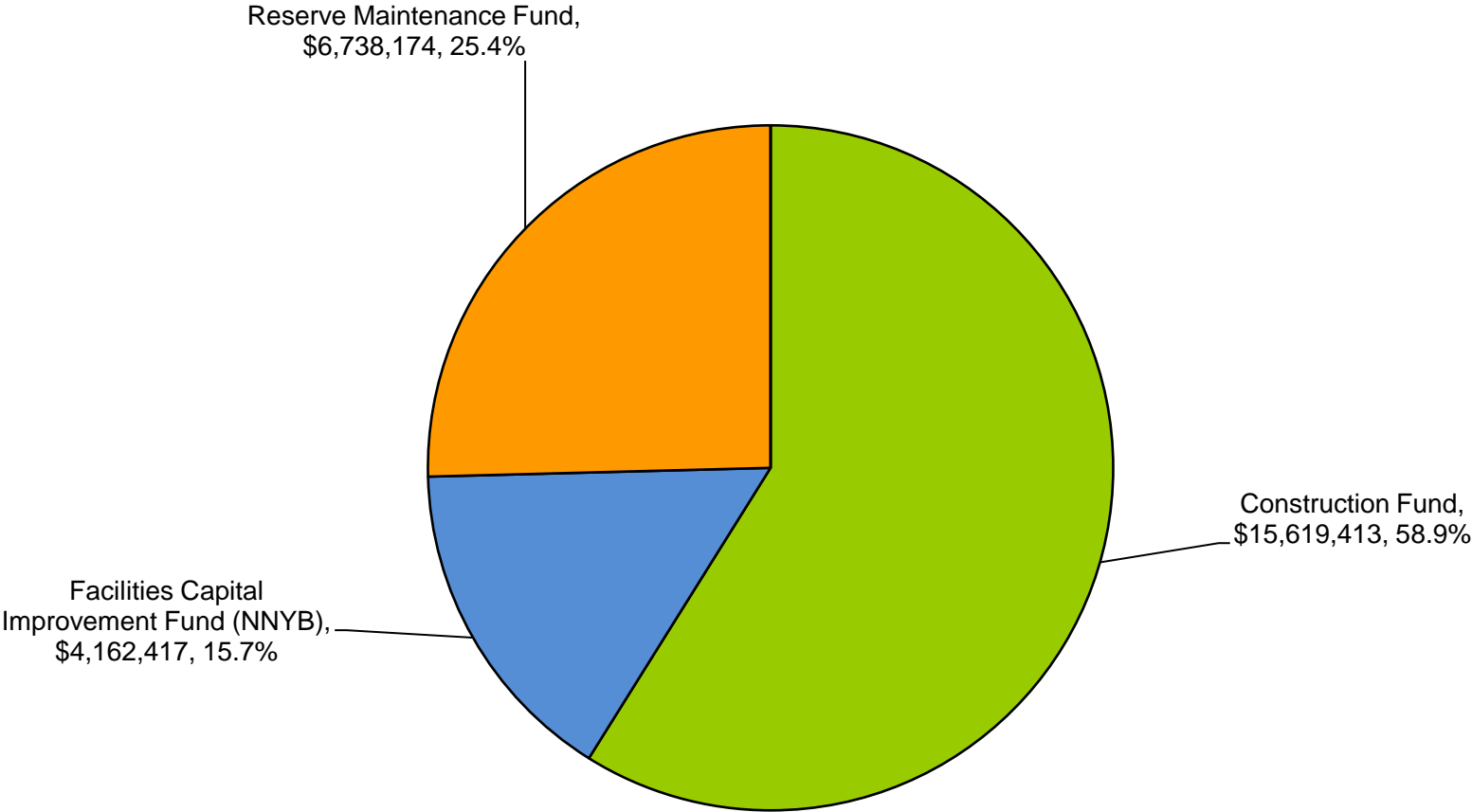
# **Thruway Capital Program**

---

**(Includes New NY Bridge Project)**

# 2022 YTD Capital Program Expenses, by Fund

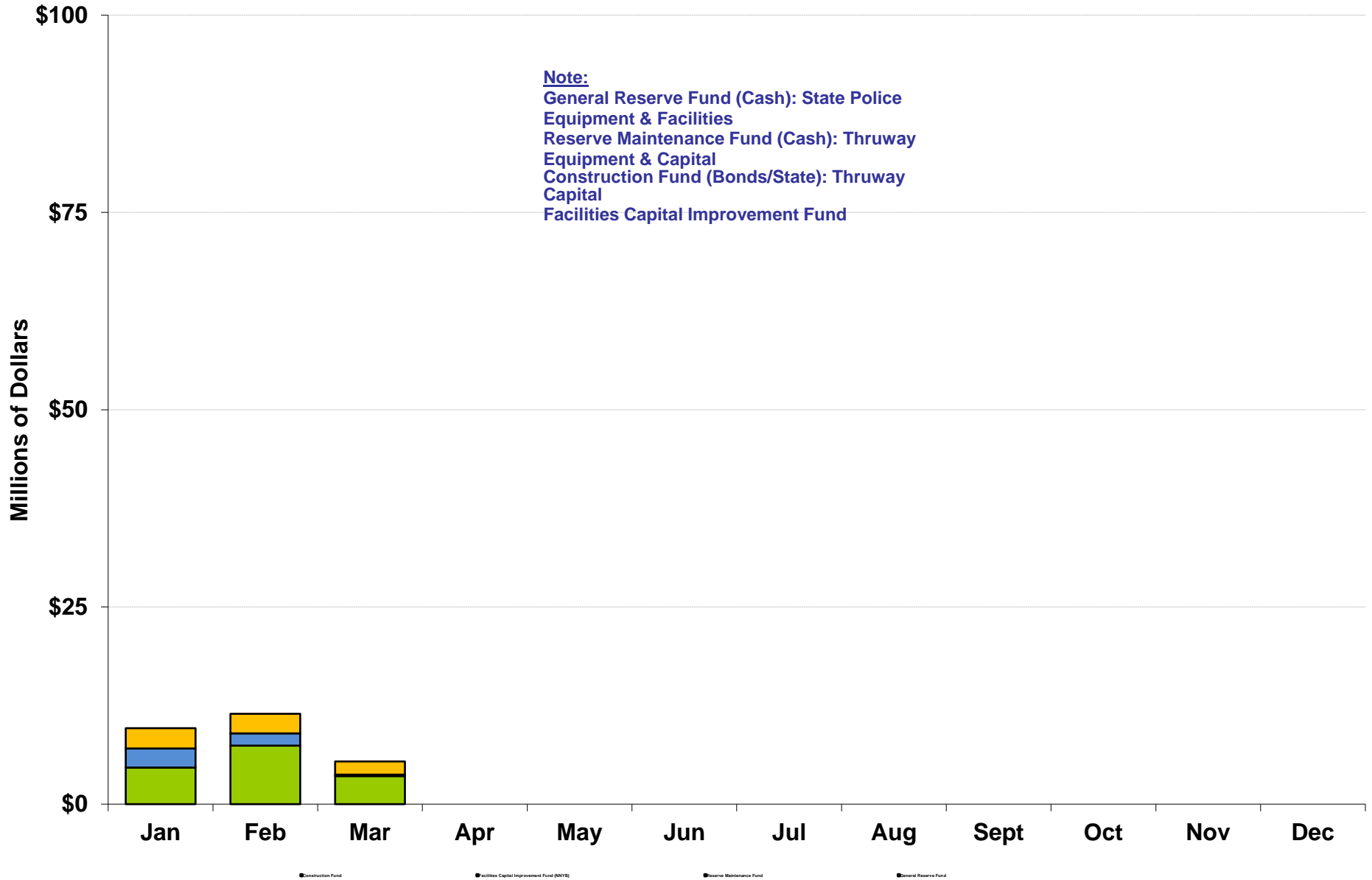
YTD Total Expenses = \$26.5 million



**Note:**  
General Reserve Fund (Cash): State Police Equipment & Facilities  
Reserve Maintenance Fund (Cash): Thruway Equipment & Capital  
Construction Fund (Bonds): Thruway Capital  
Facilities Capital Improvement Fund (Cash/Bonds): New NY Bridge Project

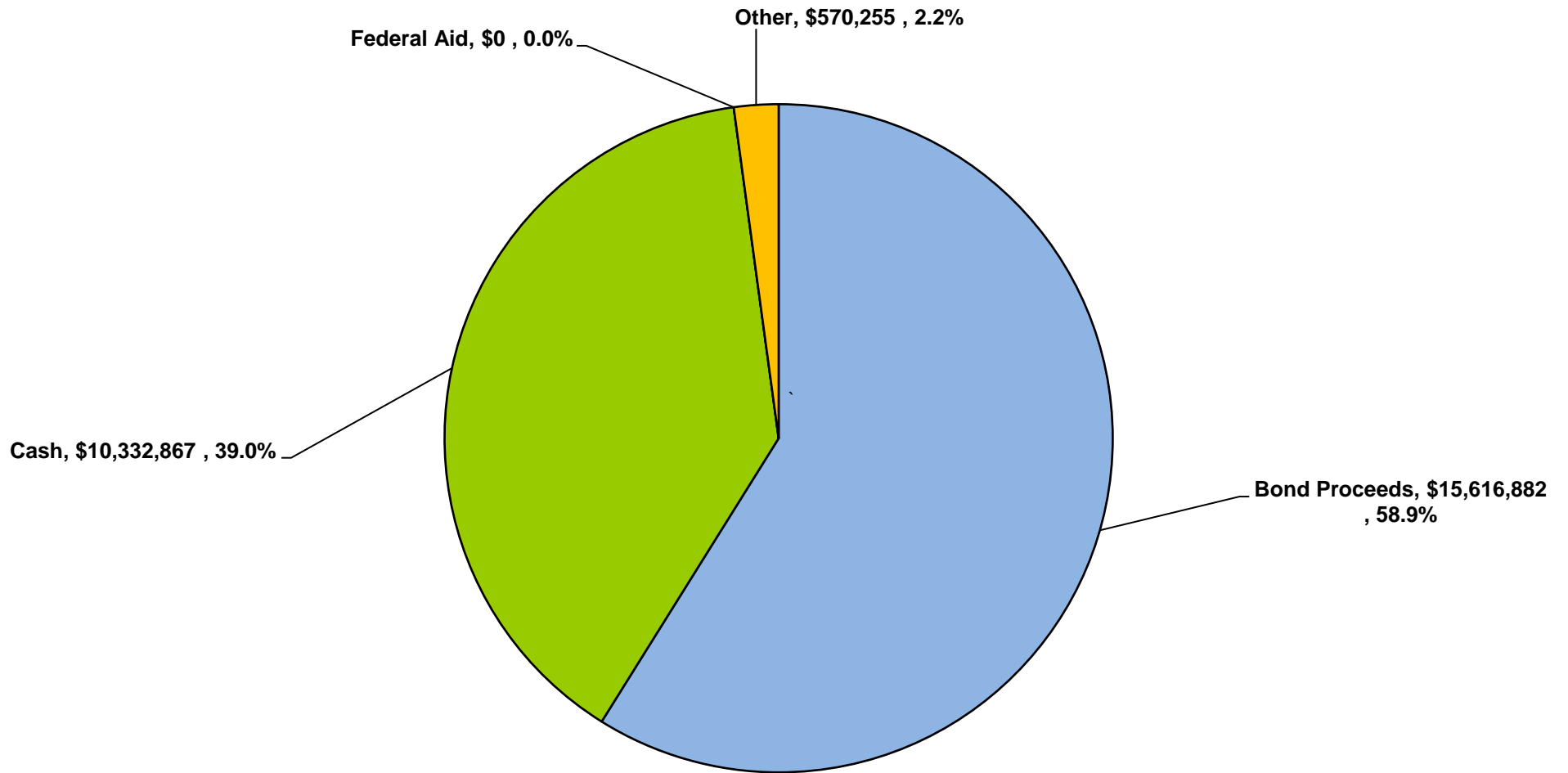
# 2022 YTD Capital Program Expenses, By Fund

YTD Total Expenses = \$26.5 million



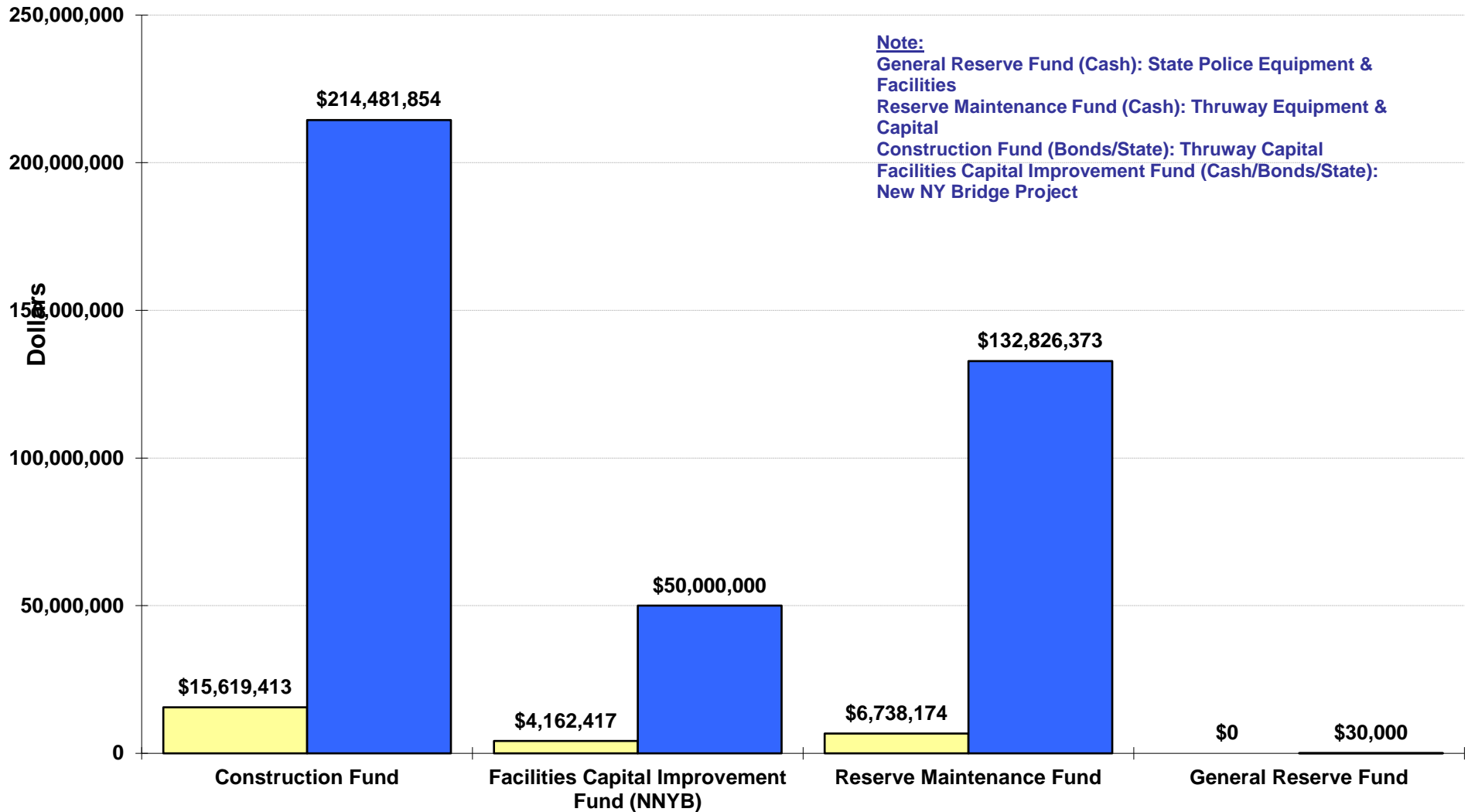
# 2022 YTD Capital Funding Sources

YTD Total Expenses = \$26.5 million



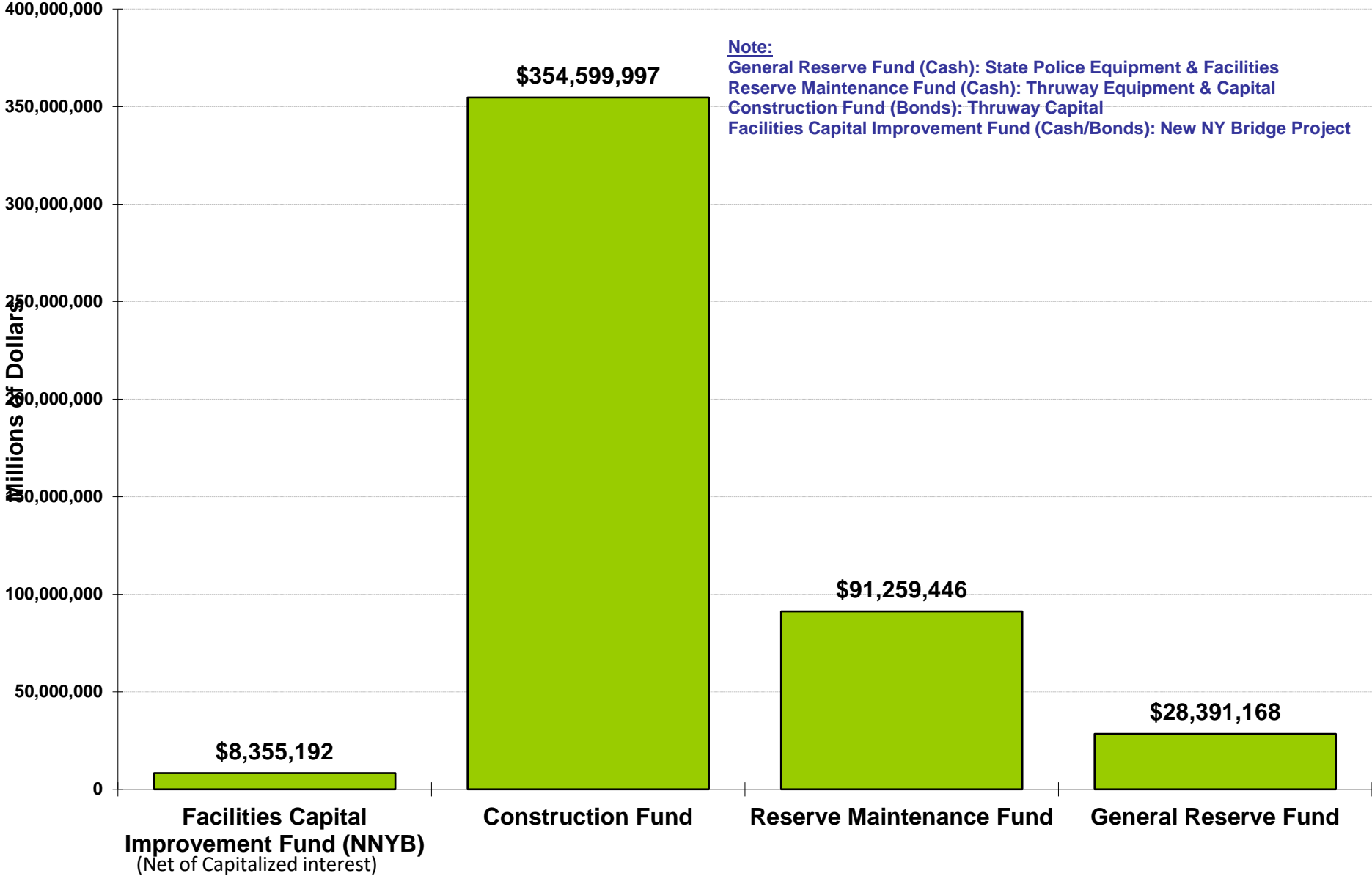
# 2022 YTD Capital Expenses, By Fund

YTD Total Expenses = \$26.5 million

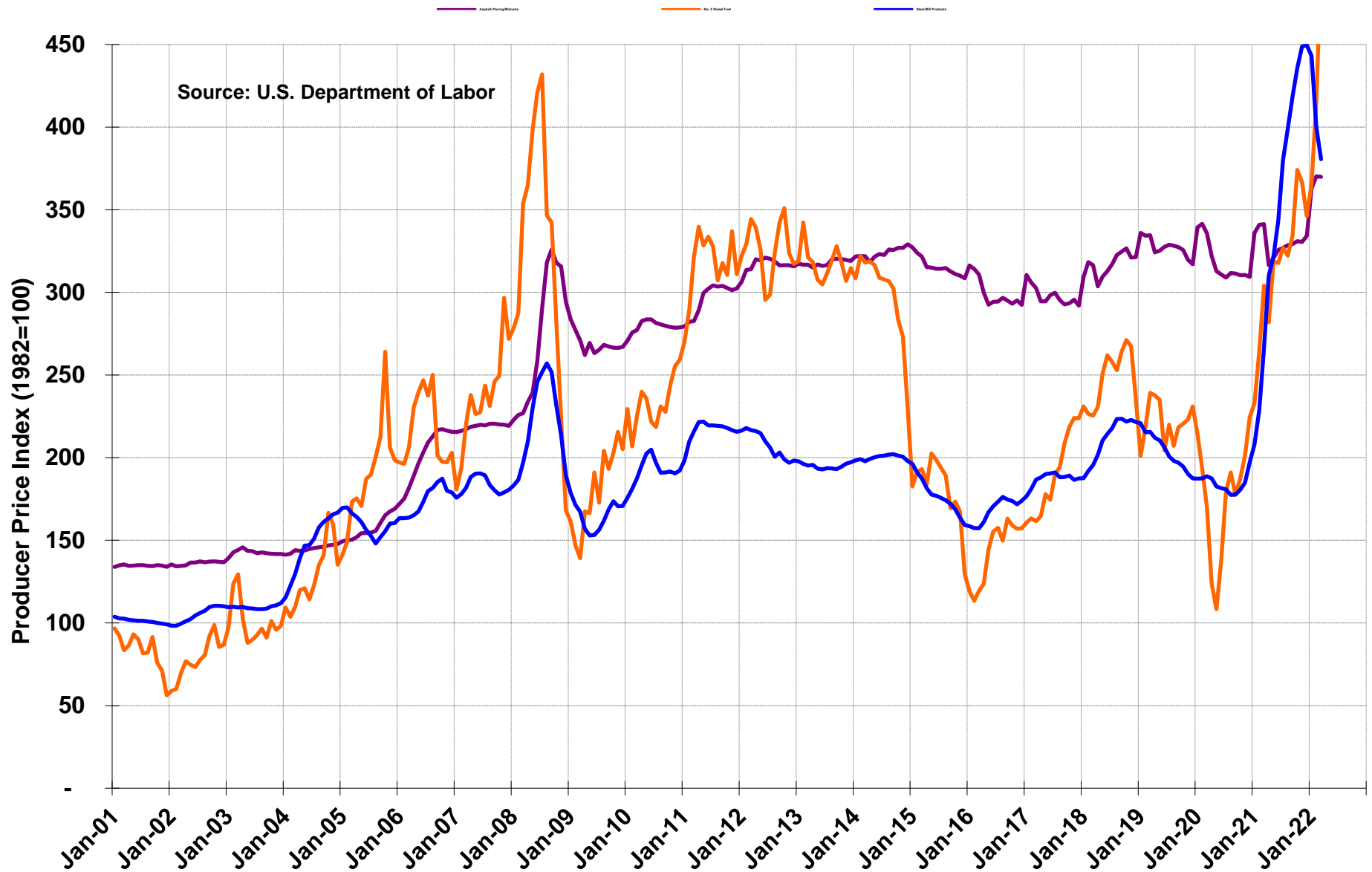




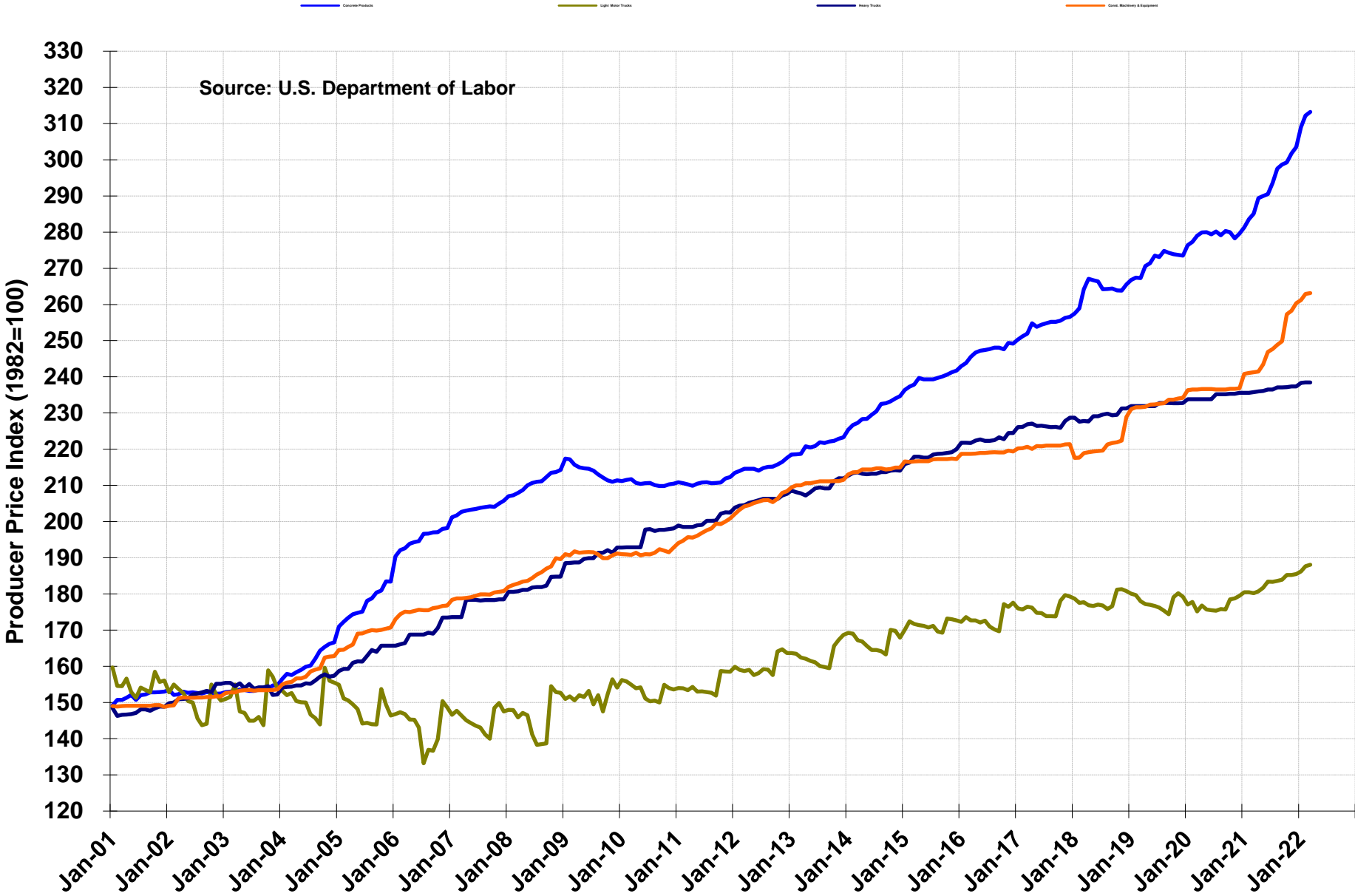
# 2022 Capital Fund Balances at End of Month



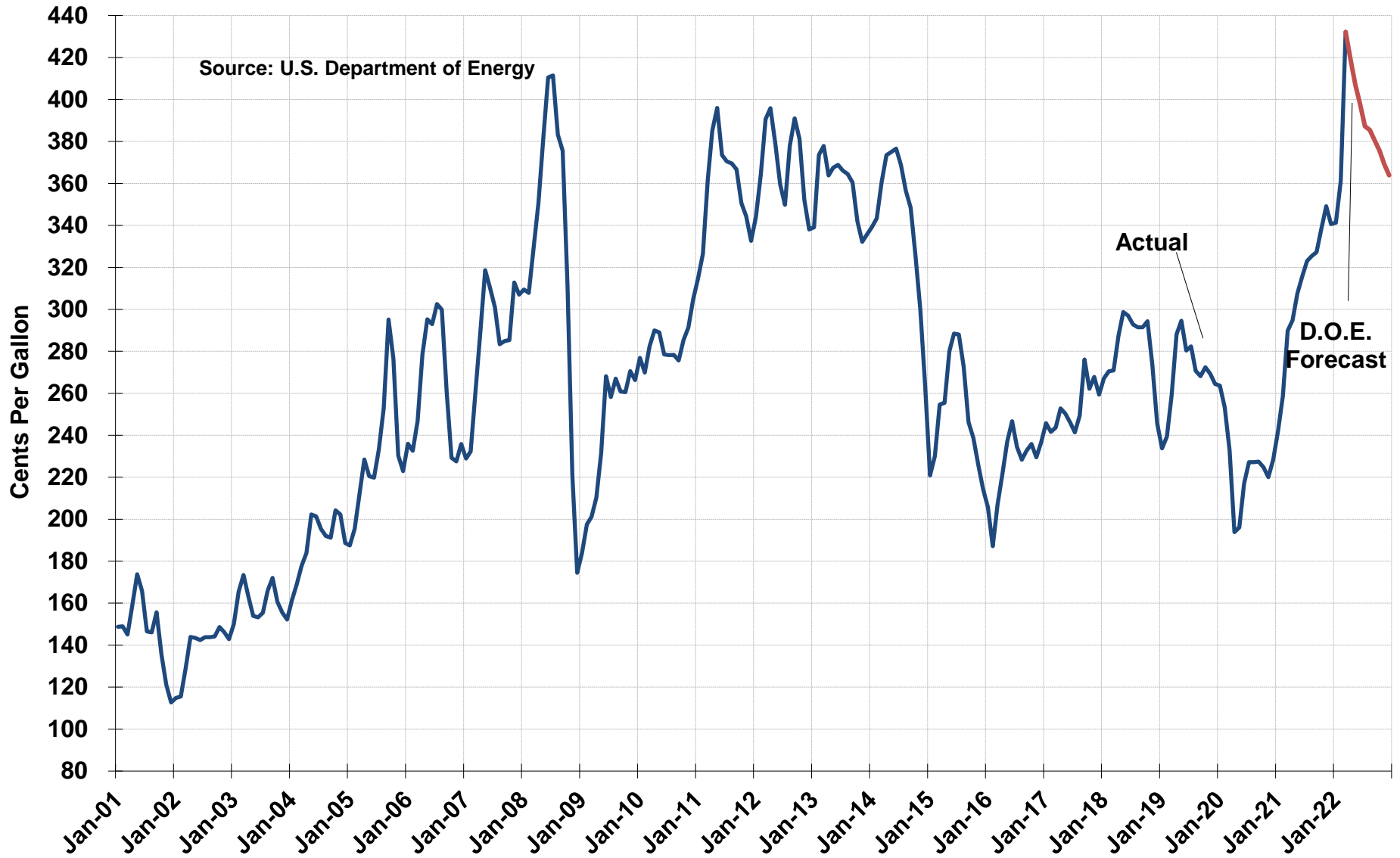
# Producer Prices: Construction Inputs



# Producer Prices: Construction Inputs



# Average Retail Price of Gasoline in U.S. All Grades



# Thruway Traffic Information

---

# Thruway Traffic Information

	Year-To-Date			Percent Change
	2021	2022	Change	
<b>Revenue Trips - Location</b>				
Toll Ticket System				
Woodbury to Williamsville	45,301,565	48,847,798	3,546,233	7.8%
Erie Section	4,178,377	4,660,424	482,047	11.5%
Total Ticket System	49,479,942	53,508,222	4,028,280	8.1%
Bridges and Barriers				
Grand Island South	2,364,416	2,553,066	188,650	8.0%
Grand Island North	1,902,420	2,043,450	141,030	7.4%
GMMC Bridge	5,192,834	5,994,803	801,969	15.4%
Yonkers	3,439,306	3,904,112	464,806	13.5%
New Rochelle (I-95)	3,864,286	4,464,485	600,199	15.5%
Spring Valley (Commercial Only)	433,054	518,129	85,075	19.6%
Harriman	3,500,003	3,717,341	217,338	6.2%
Total Bridges and Barriers	20,696,319	23,195,386	2,499,067	12.1%
Total Trips	70,176,261	76,703,608	6,527,347	9.3%
Non-Revenue Trips	454,771	495,945	41,174	9.1%
Total Revenue Trips	69,721,490	76,207,663	6,486,173	9.3%

Revenue Trips - Type	2021	2022	Change	
Passenger	56,730,446	61,642,825	4,912,379	8.7%
Commercial	12,991,044	14,564,838	1,573,794	12.1%
Total Revenue Trips	69,721,490	76,207,663	6,486,173	9.3%

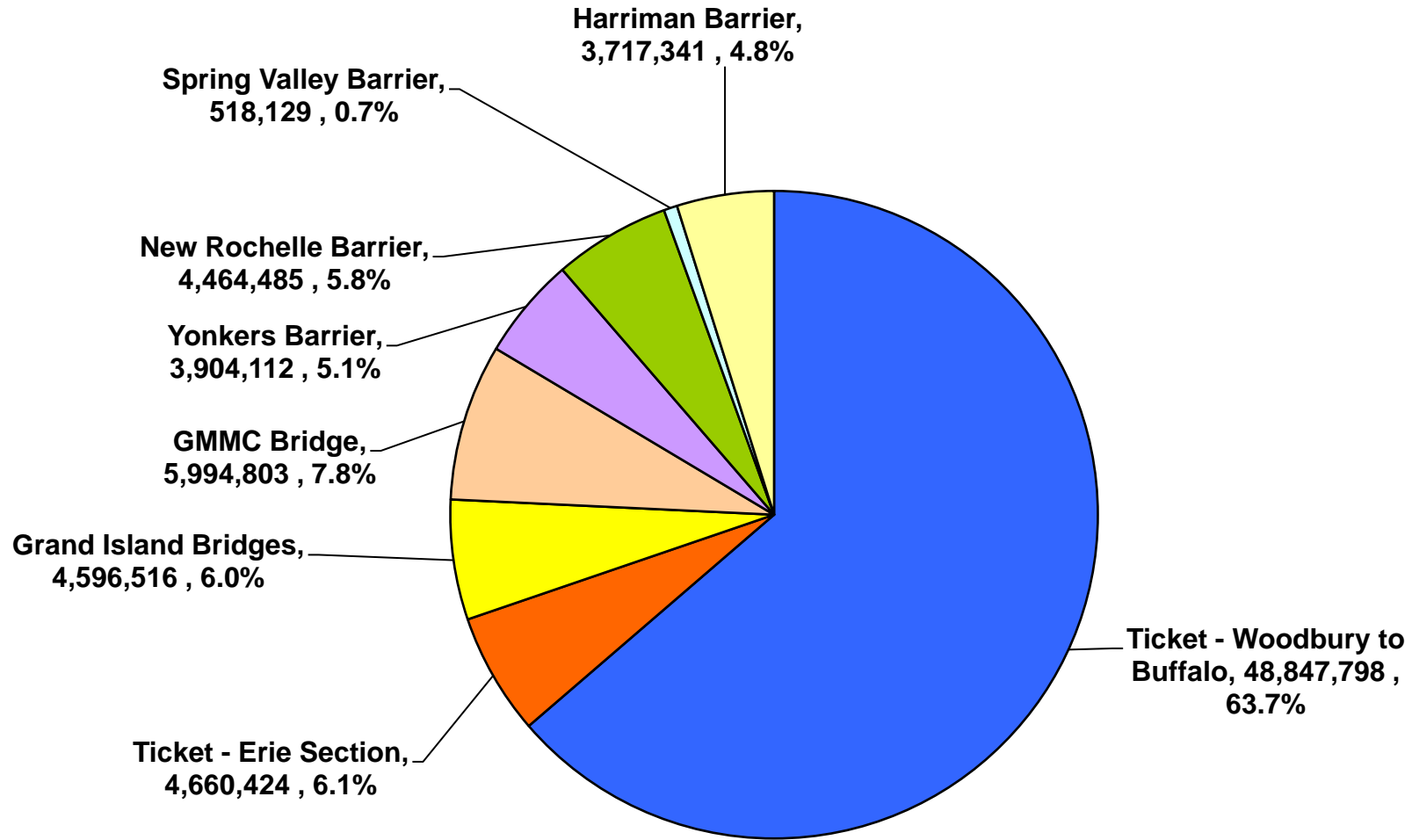
## Miles Traveled - Revenue Trips

Toll Ticket System	1,046,335,618	1,073,092,260	26,756,642	2.56%
NY Division Bridge/Barriers	294,367,735	335,008,489	40,640,754	13.81%
Williamsville-Lackawanna	69,575,625	77,092,094	7,516,469	10.80%
Grand Island Bridges	42,507,470	45,799,400	3,291,930	7.74%
Total Revenue Trip Miles	1,452,786,448	1,530,992,243	78,205,795	5.38%

## Average Trip Length (Miles) - All Trips - Ticketed System

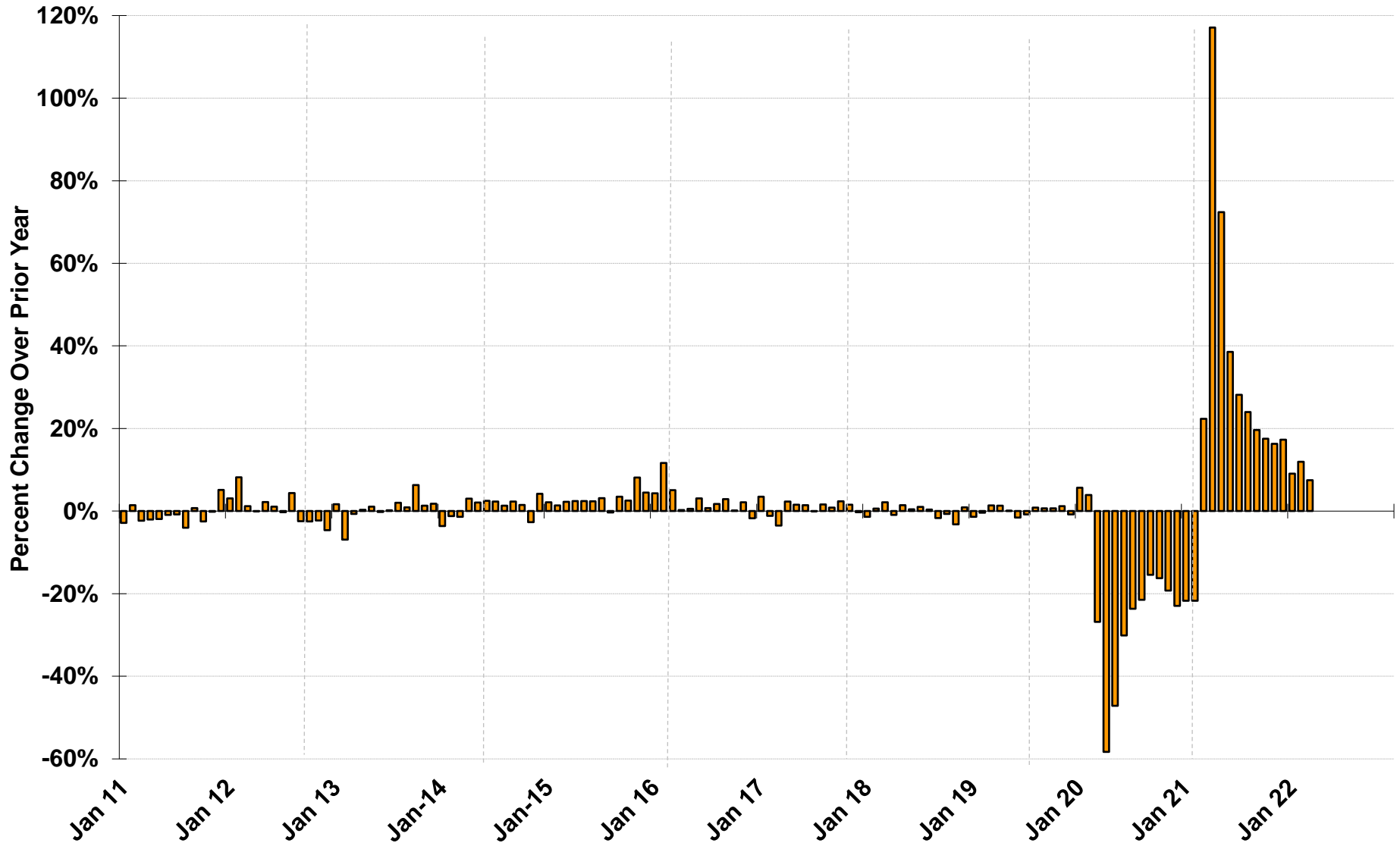
Passenger	13.82	18.88	5.06	36.61%
Commercial	19.08	25.05	5.97	31.29%
Overall	14.92	20.21	5.29	35.46%

# 2022 YTD Total Thruway Trips, By Location



# Percent Change in Monthly Thruway Traffic

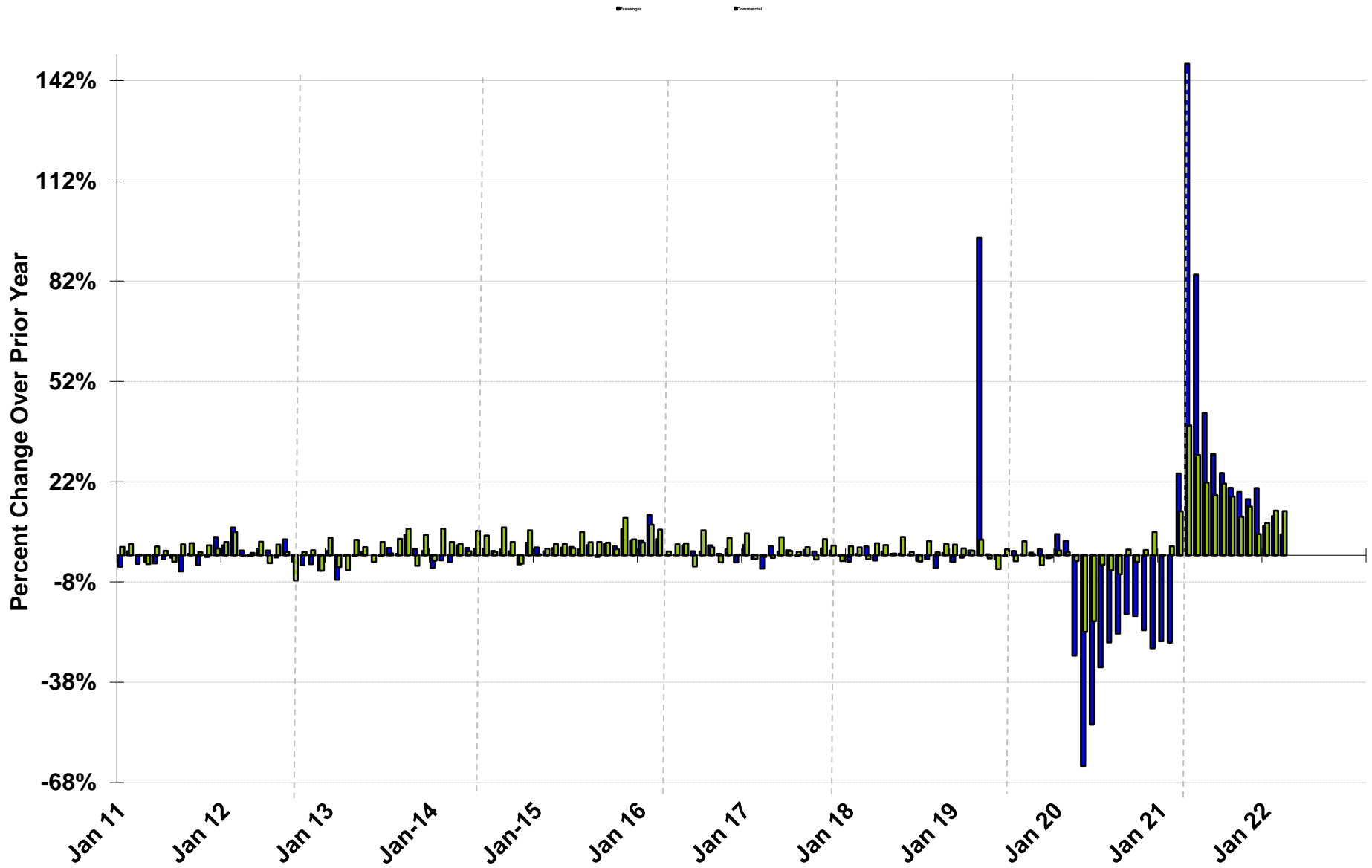
Total Passenger and Commercial Revenue Trips





# Percent Change in Monthly Thruway Traffic

By Passenger and Commercial Revenue Trips



## Operating Expenses and Revenues (Variance from 2022 Budget)

