

NEW YORK STATE THRUWAY AUTHORITY
DEPARTMENT OF ENGINEERING

ALBANY, NY
JUNE 03, 2024

AMENDMENT NO. 1
TO

CONTRACT TAB 24-23
D214981
1R MILL AND INLAY BETWEEN
MP 430.6 AND MP 438.5
IN THE BUFFALO DIVISION
OF THE NEW YORK STATE THRUWAY
IN ERIE COUNTY

IN THE LETTING OF
JUNE 12, 2024

NOTE: This amendment shall be attached to and become a part of the Proposal for Contract **TAB 24-23**.

NOTICE

For Electronic Bidders, the Project's amended EBSX file will automatically account for any necessary item changes (deletions, changes in quantities, or additions) that this Amendment may describe as being required regarding the project's estimated cost. Instructions to make physical changes to the Project Proposal's bid sheets are intended for "paper" Bidders who choose to submit bids via paper.

Questions and Answers for this project are available from the Authority's website, specifically at: http://www.thruway.ny.gov/netdata/contractors/documents/d214981_tab24-23_questions-and-answers-06-03-2024.pdf. This document may be updated periodically without formal issuance of an Amendment. Prospective bidders are advised to revisit this link weekly and before proposals are due, for any possible additional questions and answers information.

PROPOSAL

1. **DELETE** Page 19, DWG. NO. ST-BI and **REPLACE** with the attached Page **19-A1**, DWG. NO. ST-BI. The Mainline Bridge Information at Milepost 430.84, Abbot Rd., Milepost 434.31, Southwestern Boulevard WB, and Milepost 434.32, Southwestern Boulevard EB have each been updated. Milling and Inlaying is not required at these locations.
2. **ADD** the attached pages **74A-A1** and **74B-A1** to the Special Specifications section of the Proposal. The special specification for Item 646.46 25, Removable Yellow Thermoplastic Flexible Delineator Assembly is now available.

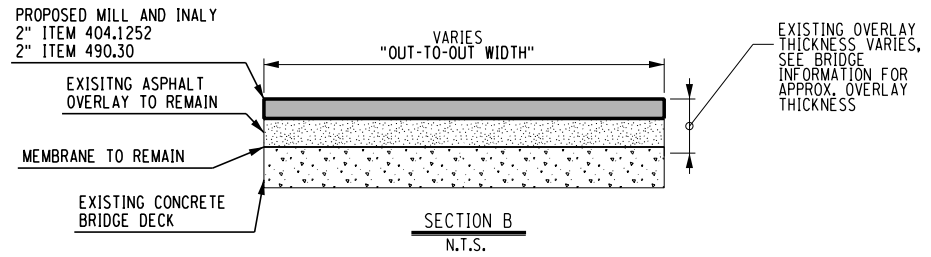
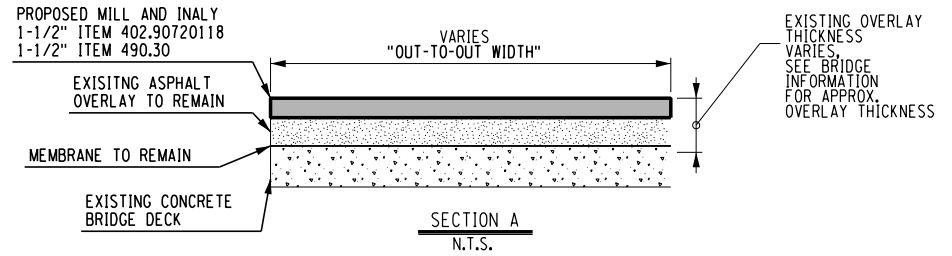
The Bidder **MUST** complete Page **210** of the Proposal acknowledging receipt of this amendment. If the Bidder fails to complete the “Amendment Acknowledgement” sheet, his bid could be declared informal thereby delaying award of the contract.

PLEASE BE GOVERNED ACCORDINGLY WHEN SUBMITTING BIDS.

Brent E. Howard, P.E.
Chief Engineer

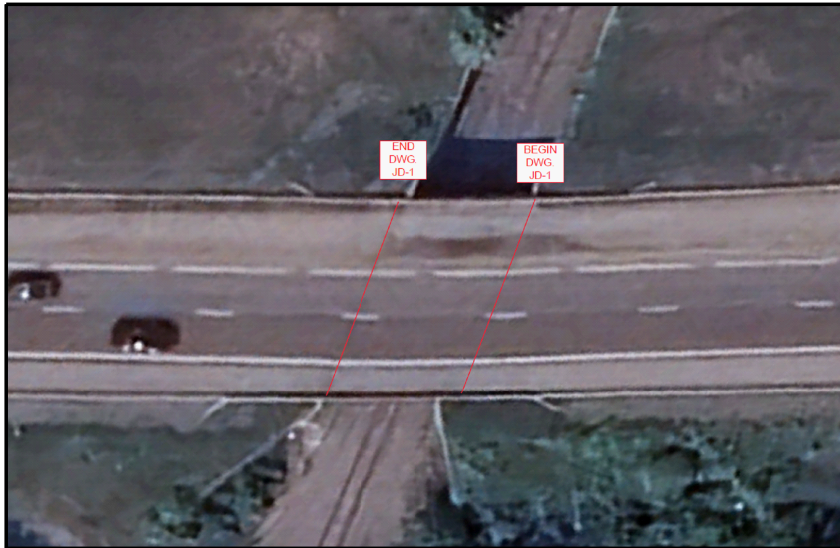
MAINLINE BRIDGE INFORMATION

#	MP	BIN	NAME	MILL AND INALY SECTION	JD-1 SAW & SEAL	Approx. Overlay Thickness
1	430.84	5512149	Abbot Rd.	NA		PCC
2	431.49	5511750	South Branch Smokes Creek	SECTION B	240'	5"
3	434.31	5015471	Southwestern Blvd. WB	NA		PCC
4	434.32	5015472	Southwestern Blvd. EB	NA		PCC
5	434.48	5512482	RR	SECTION B	112'	3"
6	434.49	5512481	RR	SECTION B	112'	3"
7	436.22	5512460	Interchange 57	SECTION A	172'	2.5"



NOTES:

1. ASPHALT DEPTHS ARE APPROXIMATE, EXACT MILLING DEPTH IS A.O.B.E.
2. REFER TO DWG. JD-1 FOR DETAIL SAW & SEAL DETAL AT STRUCTURE ABUTMENT JOINTS. WORK IS PAID UNDER ITEM 402.2502--18.



SAW AND SEAL PLAN (TYP.)
N.T.S.



TAB 24-23 / D214981

TITLE:
STRUCTURES TABLE BRIDGE INFO

DRWN BY: .DRWJ . .	DATE: 2024	SCALE: N.T.S.	DWG. NO. ST-BI
CHKD BY: .TWJJC . .			

ITEM 646.46--25 - REMOVABLE YELLOW THERMOPLASTIC FLEXIBLE DELINEATOR ASSEMBLY**1. DESCRIPTION:**

- 1.01 This work shall consist of furnishing and installing removable thermoplastic flexible delineator assemblies as shown on the plans.

2. MATERIALS:

- 2.01 Removable thermoplastic flexible delineator assembly shall be:

City Post Model 8CP36YEL332NYSTA – as manufactured by:

Pexco LLC
3110 70th Avenue East
Tacoma, WA 98424
253-284-8000
www.pexco.com/traffic

Or equal as approved by the NYS Thruway Authority.

The Contractor shall notify the Engineer of the name and address of the manufacturer in accordance with Section 106-01 *Sources of Supply*.

- 2.02 The flexible delineator assemblies shall consist of one removable delineator post, one embedded anchor receptacle, one removable threaded cap, and epoxy for holding the embedded receptacles in the ground.
- 2.03 The removable, flexible delineator shall be a yellow, polyurethane post with an outside diameter of 3 inches minimum and height of 36 inches. The post shall have two 3-inch wide bands of 3M diamond grade flexible work zone sheeting 3911, fluorescent yellow or approved equal.
- 2.04 The delineator shall be able to be repeatedly placed and removed from its service location. The delineator shall be placed into service by attaching it into the anchor receptacle by means of screw threads.
- 2.05 The embedded anchor receptacle shall be suitable for embedment in asphalt or concrete. The receptacle shall be embedded in the pavement so the cap is flush with the pavement surface.
- 2.06 When the delineator is removed from the receptacle, the removable threaded cap shall be placed into the anchor receptacle to protect threads and keep dirt and debris out.
- 2.07 Epoxy for holding the anchor receptacles in place shall meet the manufacturer's recommendations.
- 2.08 The flexible delineator assemblies shall remain serviceable after a minimum 100 impacts from a vehicle traveling at a minimum 55 mph.

3. CONSTRUCTION DETAILS:

- 3.01 The Contractor shall drill into the roadway and install the anchor receptacle and delineator assembly according to the manufacturer's instructions at the locations shown on plans.

ITEM 646.46--25 - REMOVABLE YELLOW THERMOPLASTIC FLEXIBLE DELINEATOR ASSEMBLY

4. METHOD OF MEASUREMENT:

4.01 The work will be measured as the number of removable thermoplastic flexible delineator assemblies furnished and installed.

5. BASIS OF PAYMENT:

5.01 The unit price bid for each removable thermoplastic flexible delineator assembly shall include cost of all labor, materials and equipment necessary to furnish and install each unit.