

NOTES:

- FOR STRUCTURAL NOTES SEE DWG. NO'S GS-1 AND GS-2.
- FOR GENERAL NOTES SEE DWG. NO. G-1.
- FOR SPECIAL NOTES REGARDING NAVIGATION REQUIREMENTS SEE DWG. NO. G-2.
- ALL WORK REQUIRED TO INSTALL NAVIGATION LIGHTS AND SUPPORTS SHALL BE PAID UNDER ITEM 16665.9987.
- REMOVAL OF EXISTING FENDER AND FENDER PILES SHALL BE PAID FOR UNDER ITEMS 25553.0501 AND 25553.0502, RESPECTIVELY.
- REMOVAL OF EXISTING SUPERSTRUCTURE AND SUBSTRUCTURE SHALL BE PAID UNDER ITEMS 202.12 AND 202.19, RESPECTIVELY.
- FOR ADDITIONAL DEMOLITION NOTES AND DETAILS SEE DWG. NO'S DM-1 TO DM-3.
- REMOVAL OF EXISTING PILES IN SUBSTRUCTURE SHALL BE INCLUDED IN ITEM 551.09.
- EXISTING SUBMARINE CABLE TO BE REMOVED. COST OF REMOVAL TO BE INCLUDED UNDER VARIOUS ITEMS IN THE CONTRACT.

ELEVATION
 SCALE: 1"=30'

LEGEND:

- NAVIGATION LIGHT
- BORINGS

GENERAL PLAN AND ELEVATION

STEEL ALTERNATE NO ASBUILT REVISIONS

DATE	DESCRIPTION	BY	SYM
REVISIONS			

NEW YORK STATE THRUWAY AUTHORITY
 DEPARTMENT OF ENGINEERING AND INFRASTRUCTURE
 200 SOUTHERN BLVD., ALBANY, NY 12209

TITLE OF PROJECT
BRIDGE REPLACEMENT
 LOCATION OF PROJECT
 M.P. N.E. 1.00 TO M.P. N.E. 4.15

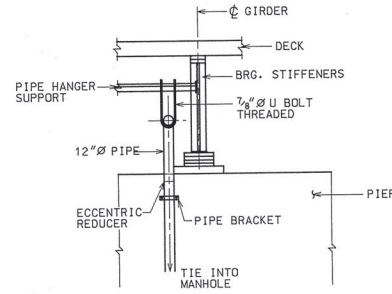
CONTRACT NUMBER:
 TANE 92-348

DATE:
 10-19-92

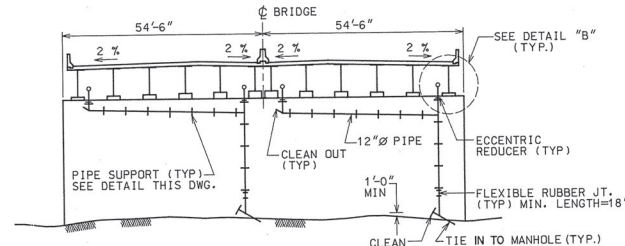
DRAWING NUMBER:
 S-1

BIN 5075439

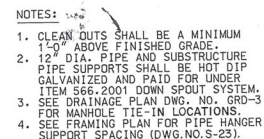
HARDESTY & HANOVER
 CONSULTING ENGINEERS
 NEW YORK, N. Y.



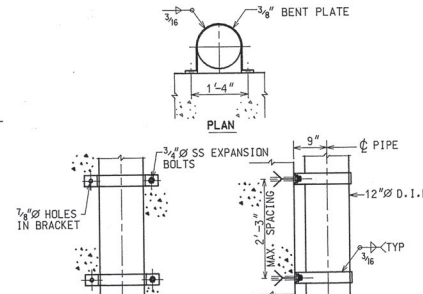
DETAIL "B"
SCALE: $1/4" = 1'-0"$



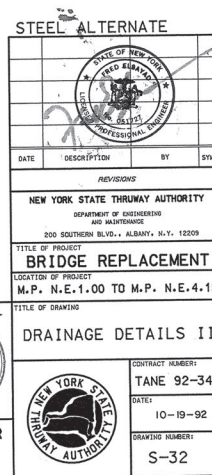
SECTION D-D
SCALE: 1" = 1'-0"



SECTION A-A
SCALE: $1/16" = 1'-0"$



ELEVATION
PIPE BRACKET
SCALE: $\frac{3}{4}'' = 1'-0''$
ID FOR UNDER ITEM 566.2001



ESTY & HANOVER
CONSULTING ENGINEERS
NEW YORK, N.Y.

3-32